

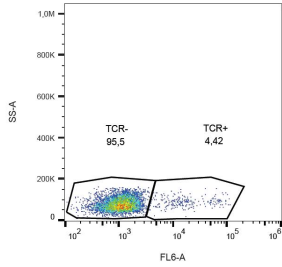
## Anti-TCR gamma + TCR delta Antibody [B1] (A86344)

### Specifications:

Name:	Anti-TCR gamma + TCR delta Antibody [B1]
Description:	Mouse monoclonal [B1] antibody to TCR gamma + TCR delta.
Specificity:	The mouse monoclonal antibody B1 (also known as B1.1) recognizes TCR gamma/delta, the subtype of T cell receptor expressed mainly in epithelial tissues and at the sites of infection.
Applications:	Flow Cytometry, IHC-P, IHC-Fr
Recommended Dilutions:	Flow Cytometry: 1-4 µg/ml
Reactivity:	Human, Non-Human Primates
Immunogen:	Unfortunately, this information is considered to be commercially sensitive.
Host:	Mouse
Clonality:	Monoclonal
Clone ID:	B1
Isotype:	IgG1
Light Chains:	kappa
Conjugate:	Unconjugated
Purification:	Protein A chromatography.
Concentration:	1 mg/ml
Purity:	> 95% (by SDS-PAGE).
Product Form:	Liquid
Formulation:	Supplied in Phosphate Buffered Saline, pH 7.4, with 15 mM Sodium Azide.
Storage:	Shipped at 4°C. Upon delivery aliquot and store at -20°C. Avoid freeze / thaw cycles.
Disclaimer:	This product is for research use only. It is not intended for diagnostic or therapeutic use.

## Anti-TCR gamma + TCR delta Antibody [B1] (A86344)

Images:



Surface staining of human peripheral blood lymphocytes with Anti-TCR gamma/delta Antibody (A86344).