

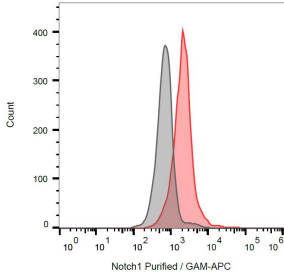
Anti-Notch1 Antibody [mN1A] (A86356)

Specifications:

Name:	Anti-Notch1 Antibody [mN1A]
Description:	Mouse monoclonal [mN1A] antibody to Notch1.
Specificity:	The mouse monoclonal antibody mN1A recognizes intracellular domain of Notch 1 protein, mainly its activated form. The unprocessed Notch 1 protein is recognized with lower affinity.
Applications:	Flow Cytometry, IP, WB, IHC-Fr, ICC
Recommended Dilutions:	Flow Cytometry: 1-4 µg/ml
Reactivity:	Human, Mouse
Immunogen:	GST fusion protein containing cdc10-NCR region of mouse Notch1.
Host:	Mouse
Clonality:	Monoclonal
Clone ID:	mN1A
Isotype:	IgG1
Light Chains:	kappa
Conjugate:	Unconjugated
Purification:	Protein A chromatography.
Concentration:	1 mg/ml
Purity:	> 95% (by SDS-PAGE).
Product Form:	Liquid
Formulation:	Supplied in Phosphate Buffered Saline, pH 7.4, with 15 mM Sodium Azide.
Storage:	Shipped at 4°C. Upon delivery aliquot and store at -20°C. Avoid freeze / thaw cycles.
Disclaimer:	This product is for research use only. It is not intended for diagnostic or therapeutic use.

Anti-Notch1 Antibody [mN1A] (A86356)

Images:



Intracellular staining of Notch1 in Jurkat cells using Anti-Notch 1 Antibody (A86356).