

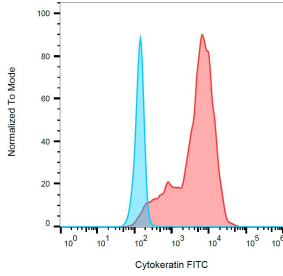
## Anti-pan Cytokeratin Antibody [C-11] (FITC) (A86451)

### Specifications:

Name:	Anti-pan Cytokeratin Antibody [C-11] (FITC)
Description:	Mouse monoclonal [C-11] antibody to pan Cytokeratin (FITC).
Specificity:	This antibody reacts with Cytokeratin peptides 4, 5, 6, 8, 10, 13, and 18. Cytokeratins are members of intermediate filaments subfamily intracellular proteins represented in epithelial tissues.
Applications:	Flow Cytometry
Recommended Dilutions:	Flow Cytometry: 1 µg/ml
Reactivity:	Human, Rat, Goat, Mouse
Immunogen:	Keratin-enriched preparation from human epidermoid carcinoma cell line A431.
Host:	Mouse
Clonality:	Monoclonal
Clone ID:	C-11
Isotype:	IgG1
Conjugate:	FITC
Purification:	This antibody is conjugated with FITC under optimum conditions. The conjugate is purified by size-exclusion chromatography.
Concentration:	1 mg/ml
Product Form:	Liquid
Formulation:	Supplied in Phosphate Buffered Saline, pH 7.4, with 15 mM Sodium Azide.
Storage:	Store in the dark at 2-8°C. Do not freeze!
Disclaimer:	This product is for research use only. It is not intended for diagnostic or therapeutic use.

## Anti-pan Cytokeratin Antibody [C-11] (FITC) (A86451)

### Images:



Intracellular flow cytometry analysis of cytokeratin expression in HeLa cells using Anti-Cytokeratin (Pan Reactive) Antibody (A86451).