

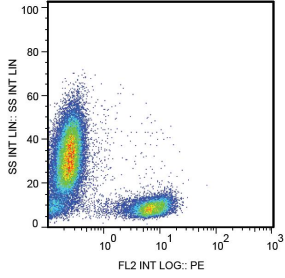
## Anti-CD28 Antibody [CD28.2] - Low endotoxin, Azide free (A86496)

### Specifications:

Name:	Anti-CD28 Antibody [CD28.2] - Low endotoxin, Azide free
Description:	Mouse monoclonal [CD28.2] antibody to CD28.
Specificity:	This antibody recognizes an extracellular epitope of CD28, a disulfide-linked homodimeric type I glycoprotein (monomer of MW 44 kDa) which is a critical costimulatory receptor of T cells.
Applications:	Flow Cytometry, IP, WB, IHC-Fr, ICC, Functional Studies
Recommended Dilutions:	Flow Cytometry: 1-12 µg/ml
Reactivity:	Human, Non-Human Primates
Immunogen:	DC28.1.3.3 murine T cell hybridoma transfected with human CD28 cDNA.
Host:	Mouse
Clonality:	Monoclonal
Clone ID:	CD28.2
Isotype:	IgG1
Light Chains:	kappa
Conjugate:	Unconjugated
Purification:	Protein A chromatography.
Concentration:	1 mg/ml
Purity:	> 95% (by SDS-PAGE).
Product Form:	Liquid
Formulation:	Supplied in Phosphate Buffered Saline, pH 7.4, without Sodium Azide (0.2 µm filter sterilized). Endotoxin level is less than 0.01 EU/µg of the protein, as determined by the LAL test.
Storage:	Shipped at 4°C. Upon delivery aliquot and store at -20°C. Avoid freeze / thaw cycles.
Disclaimer:	This product is for research use only. It is not intended for diagnostic or therapeutic use.

## Anti-CD28 Antibody [CD28.2] - Low endotoxin, Azide free (A86496)

Images:



Surface staining of human peripheral blood leukocytes with Anti-CD28 Antibody (A86496).