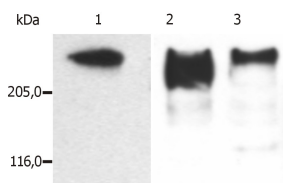


## Anti-MAP2 Antibody [MT-08] (A86619)

### Specifications:

Name:	Anti-MAP2 Antibody [MT-08]
Description:	Mouse monoclonal [MT-08] antibody to MAP2.
Specificity:	The antibody MT-08 recognizes an epitope (aa 1375-1395) located in central domain of molecule Microtubule Associated Protein 2ab (MAP2ab).
Applications:	IP, WB, IHC-P, IHC-Fr, ICC, ELISA
Recommended Dilutions:	IHC-P: 10 µg/ml
Reactivity:	Human, Porcine, Mouse
Immunogen:	Microtubule protein (bovine brain) enriched for kinesin.
Host:	Mouse
Clonality:	Monoclonal
Clone ID:	MT-08
Isotype:	IgG1
Conjugate:	Unconjugated
Purification:	Protein A chromatography.
Concentration:	1 mg/ml
Purity:	> 95% (by SDS-PAGE).
Product Form:	Liquid
Formulation:	Supplied in Phosphate Buffered Saline, pH 7.4, with 15 mM Sodium Azide.
Storage:	Shipped at 4°C. Upon delivery aliquot and store at -20°C. Avoid freeze / thaw cycles.
Disclaimer:	This product is for research use only. It is not intended for diagnostic or therapeutic use.

### Images:



Western blotting analysis (reducing conditions) of microtubules partially purified from porcine brain lysate. Lane 1: Immunostaining with Anti-MAP2ab Antibody [MT-01]. Lane 2: Immunostaining with Anti-MAP2ab Antibod [MT-07]. Lane 3: Immunostaining with Anti-MAP2ab Antibody (A86619).