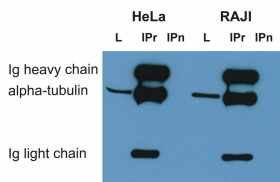


Anti-alpha Tubulin Antibody [TU-16] (A86709)

Specifications:

Name:	Anti-alpha Tubulin Antibody [TU-16]
Description:	Mouse monoclonal [TU-16] antibody to alpha Tubulin.
Specificity:	The antibody TU-16 reacts with alpha-tubulin of all tested species, under denaturing and non-denaturing conditions.
Applications:	IP, WB, IHC-P, ICC, ELISA
Recommended Dilutions:	WB: 1-2 µg/ml, IHC-P: 10 µg/ml
Reactivity:	Human, Mouse, Rat, Porcine, Many Others
Immunogen:	Porcine brain microtubule protein MTP-1.
Host:	Mouse
Clonality:	Monoclonal
Clone ID:	TU-16
Isotype:	IgM
Conjugate:	Unconjugated
Purification:	Purified by precipitation and chromatography.
Concentration:	1 mg/ml
Purity:	> 95% (by SDS-PAGE).
Product Form:	Liquid
Formulation:	Supplied in Tris Buffered Saline, pH 8.0, with 15 mM Sodium Azide.
Storage:	Shipped at 4°C. Upon delivery aliquot and store at -20°C. Avoid freeze / thaw cycles.
Disclaimer:	This product is for research use only. It is not intended for diagnostic or therapeutic use.

Images:



Immunoprecipitation of alpha-tubulin from HeLa and RAJI cell lysate by Anti-alpha Tubulin Antibody [TU-16] and its detection by Anti-alpha Tubulin Antibody [TU-01]. IgM heavy chain (76-92 kDa) and IgM light chain (25-30 kDa) indicated. Mr of alpha tubulin is around 50 kDa. L = lysate. IPr = immunoprecipitate (reducing conditions).