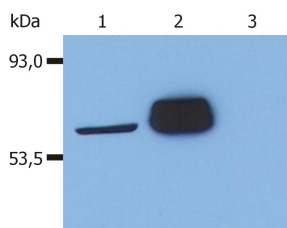


## Anti-LCK Antibody [LCK-01] (A86727)

### Specifications:

Name:	Anti-LCK Antibody [LCK-01]
Description:	Mouse monoclonal [LCK-01] antibody to LCK.
Specificity:	This antibody recognizes defined epitope (amino acids 22-36) of LCK, a 56 kDa Src-family protein tyrosine kinase (intracellular antigen).
Applications:	Flow Cytometry, IP, WB, ICC
Recommended Dilutions:	Flow Cytometry: 1-5 µg/ml
Reactivity:	Human
Immunogen:	Peptide corresponding to amino acids 22-36 in the sequence of human Lck.
Host:	Mouse
Clonality:	Monoclonal
Clone ID:	LCK-01
Isotype:	IgG1
Conjugate:	Unconjugated
Purification:	Protein A chromatography.
Concentration:	1 mg/ml
Purity:	> 95% (by SDS-PAGE).
Product Form:	Liquid
Formulation:	Supplied in Phosphate Buffered Saline, pH 7.4, with 15 mM Sodium Azide.
Storage:	Shipped at 4°C. Upon delivery aliquot and store at -20°C. Avoid freeze / thaw cycles.
Disclaimer:	This product is for research use only. It is not intended for diagnostic or therapeutic use.

### Images:



Western Blotting analysis (reducing conditions) of human Lck in whole cell lysate using Anti-Lck Antibody (A86727). Lane 1: J. CaM-1.6 cell line (a mutant derivative of the JURKAT cell line) transfected with Lck. Lane 2: HEK-293T cell line transfected with Lck. Lane 3: HEK-293T cell line (non-transfected).