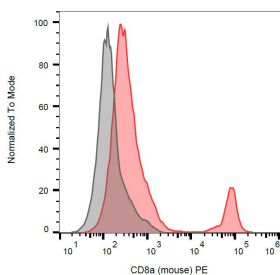


## Anti-CD8 alpha Antibody [53-6.7] (PE) (A86752)

### Specifications:

Name:	Anti-CD8 alpha Antibody [53-6.7] (PE)
Description:	Rat monoclonal [53-6.7] antibody to CD8 alpha (PE).
Specificity:	This antibody recognizes an extracellular epitope of murine CD8a (32-34 kDa, alpha chain of the CD8 antigen).
Applications:	Flow Cytometry
Recommended Dilutions:	Flow Cytometry: 2 µg/ml
Reactivity:	Mouse
Immunogen:	Mouse spleen cells.
Host:	Rat
Clonality:	Monoclonal
Clone ID:	53-6.7
Isotype:	IgG2a
Light Chains:	kappa
Conjugate:	PE
Purification:	This antibody is conjugated with PE under optimum conditions. The conjugate is purified by size-exclusion chromatography.
Concentration:	0.5 mg/ml
Product Form:	Liquid
Formulation:	Supplied in Phosphate Buffered Saline, pH 7.4, with 15 mM Sodium Azide.
Storage:	Store in the dark at 2-8°C. Do not freeze!
Disclaimer:	This product is for research use only. It is not intended for diagnostic or therapeutic use.

### Images:



Surface staining of murine splenocytes with Anti-CD8a Antibody (A86752).