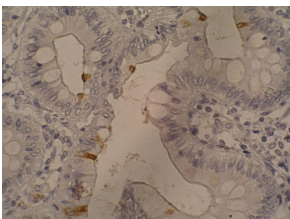


Anti-Sialyl Lewis a Antibody [121SLE] (A86801)

Specifications:

Name:	Anti-Sialyl Lewis a Antibody [121SLE]
Description:	Mouse monoclonal [121SLE] antibody to Sialyl Lewis a.
Specificity:	This antibody recognizes Sialyl Lewis a containing glycolipids.
Applications:	IHC-P, ELISA
Recommended Dilutions:	IHC-P: 10 µg/ml
Reactivity:	Human
Immunogen:	Immunoprecipitate obtained after immunodiffusion of MAb 19-9 and mucins isolated from an ovarian cyst of a 0Le(a+b-) patient.
Host:	Mouse
Clonality:	Monoclonal
Clone ID:	121SLE
Isotype:	IgM
Conjugate:	Unconjugated
Purification:	Purified by precipitation and chromatography.
Concentration:	1 mg/ml
Purity:	> 95% (by SDS-PAGE).
Product Form:	Liquid
Formulation:	Supplied in Tris Buffered Saline, pH 8.0, with 15 mM Sodium Azide.
Storage:	Shipped at 4°C. Upon delivery aliquot and store at -20°C. Avoid freeze / thaw cycles.
Disclaimer:	This product is for research use only. It is not intended for diagnostic or therapeutic use.

Images:



Immunohistochemistry staining of sialyl-Lewis a in colorectal adenocarcinoma (paraffin-embedded sections) with Anti-Sialyl Lewis A Antibody (A86801).