

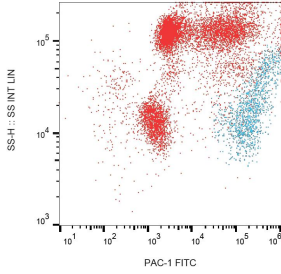
## Anti-PAC-1 Antibody [PAC-1] (FITC) (A86877)

### Specifications:

Name:	Anti-PAC-1 Antibody [PAC-1] (FITC)
Description:	Mouse monoclonal [PAC-1] antibody to PAC-1 (FITC).
Specificity:	This antibody recognizes an extracellular activation-induced conformational epitope PAC-1 on CD41/CD61 complex (gpIIb/IIIa), also known as integrin alpha IIb beta 3, a receptor which mediates platelet aggregation.
Applications:	Flow Cytometry
Recommended Dilutions:	Flow Cytometry: This reagent is designed for analysis of human blood cells using 4 µl reagent / 100 µl of whole blood or 10 <sup>6</sup> cells in a suspension.
Reactivity:	Human
Immunogen:	Human platelets.
Host:	Mouse
Clonality:	Monoclonal
Clone ID:	PAC-1
Isotype:	IgM
Light Chains:	kappa
Conjugate:	FITC
Purification:	This antibody is conjugated with FITC under optimum conditions. The conjugate is purified by size-exclusion chromatography.
Product Form:	Liquid
Formulation:	Supplied in Tris Buffered Saline, pH 8.0, with 15 mM Sodium Azide.
Storage:	Store in the dark at 2-8°C. Do not freeze!
Disclaimer:	This product is for research use only. It is not intended for diagnostic or therapeutic use.

## Anti-PAC-1 Antibody [PAC-1] (FITC) (A86877)

### Images:



Surface staining of PAC-1 on PHA-activated (1 hour) human peripheral blood with Anti-PAC-1 Antibody (A86877).