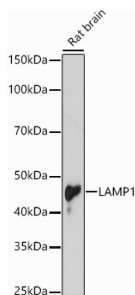


Anti-LAMP1 Antibody (A87605)

Specifications:

Name:	Anti-LAMP1 Antibody
Description:	Rabbit polyclonal antibody to LAMP1.
Applications:	WB, IHC, ICC/IF
Recommended Dilutions:	WB: 1:500-1:1,000, ICC/IF: 1:50-1:200, IHC: 1:50-1:200
Reactivity:	Human, Mouse, Rat
Immunogen:	A synthetic peptide corresponding to a sequence within amino acids 150-250 of human LAMP1 (NP_005552.3).
Sequence:	DKKYRCVSGTQVHMNNVTVLHDAIQAYLSNSSFSRGETRCEQDRPSPTTAPPAPPS PSPSPVPKSPVSKYNSVSGTNGTCLLASMGLQLNLTYERKDNT
Host:	Rabbit
Clonality:	Polyclonal
Isotype:	IgG
Conjugate:	Unconjugated
Purification:	Affinity purification.
Molecular Weight:	45 kDa / 110 kDa
Product Form:	Liquid
Formulation:	Supplied in Phosphate Buffered Saline, pH 7.3, with 50% Glycerol and 0.05% Proclin 300.
Storage:	Shipped at 4°C. Upon delivery aliquot and store at -20°C. Avoid freeze / thaw cycles.
Disclaimer:	This product is for research use only. It is not intended for diagnostic or therapeutic use.

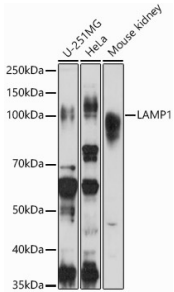
Images:



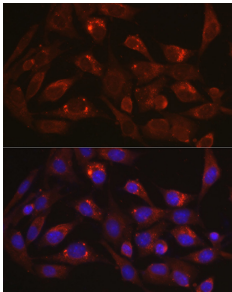
Western blot analysis of extracts of Rat brain, using Anti-LAMP1 Antibody (A87605) at 1:1,000 dilution. The secondary antibody was Goat Anti-Rabbit IgG H&L Antibody (HRP) at 1:10,000 dilution. Lysates/proteins were present at 25µg per lane. The blocking buffer used was 3% non-fat dry milk in TBST. Detection was with a ECL Basic Kit. Exposure time: 30s.

Anti-LAMP1 Antibody (A87605)

Images continued:



Western blot analysis of extracts of various cell lines, using Anti-LAMP1 Antibody (A87605) at 1:1,000 dilution. The secondary antibody was Goat Anti-Rabbit IgG H&L Antibody (HRP) at 1:10,000 dilution. Lysates/proteins were present at 25 μ g per lane. The blocking buffer used was 3% non-fat dry milk in TBST. Detection was with a ECL Basic Kit. Exposure time: 180s.



Immunofluorescence analysis of BALA-3T3 cells using Anti-LAMP1 Antibody (A87605) at a dilution of 1:100 (40x lens). DAPI was used to stain the cell nuclei (blue).