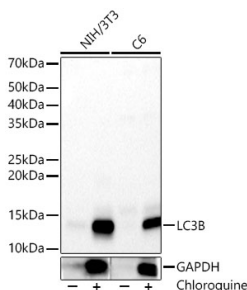


## Anti-LC3B Antibody (A88439)

### Specifications:

Name:	Anti-LC3B Antibody
Description:	Rabbit polyclonal antibody to LC3B.
Applications:	WB, IHC
Recommended Dilutions:	WB: 1:1,000-1:5,000, IHC: 1:50-1:200
Reactivity:	Human, Mouse, Rat
Immunogen:	A synthetic peptide corresponding to a sequence within amino acids 1-50 of human LC3B (NP_073729.1).
Sequence:	MPSEKTFKQRRTFEQRVEDVRLIREQHPTKIPVIERYKGEKQLPVLDKT
Host:	Rabbit
Clonality:	Polyclonal
Isotype:	IgG
Conjugate:	Unconjugated
Purification:	Affinity purification.
Molecular Weight:	14 kDa / 16 kDa
Product Form:	Liquid
Formulation:	Supplied in Phosphate Buffered Saline, pH 7.3, with 50% Glycerol and 0.01% Thiomersal.
Storage:	Shipped at 4°C. Upon delivery aliquot and store at -20°C. Avoid freeze / thaw cycles.
Disclaimer:	This product is for research use only. It is not intended for diagnostic or therapeutic use.

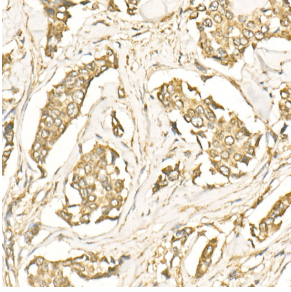
### Images:



Western blot analysis of extracts of various lysates, using Anti-LC3B Antibody (A88439) at 1:2,000 dilution. NIH/3T3 and C6 were treated by Chloroquine (50  $\mu$ M) at 37°C for 20 hours. The secondary antibody was Goat Anti-Rabbit IgG H&L Antibody (HRP) at 1:10,000 dilution. Lysates/proteins were present at 25 $\mu$ g per lane. The blocking buffer used was 3% non-fat dry milk in TBST. Detection was with a ECL Basic Kit. Exposure time: 20s.

## Anti-LC3B Antibody (A88439)

Images continued:



Immunohistochemistry analysis of paraffin-embedded human breast cancer tissue using Anti-LC3B Antibody (A88439) at a dilution of 1:250 (20x lens). Perform high pressure antigen retrieval with 10 mM citrate buffer pH 6.0 before commencing with IHC staining protocol.