

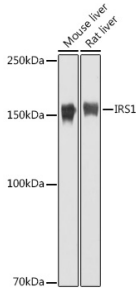
Anti-IRS1 Antibody (A88568)

Specifications:

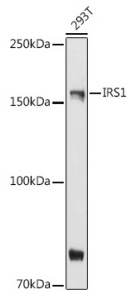
Name:	Anti-IRS1 Antibody
Description:	Rabbit polyclonal antibody to IRS1.
Applications:	WB, IHC, ICC/IF
Recommended Dilutions:	WB: 1:500-1:1,000, IHC: 1:50-1:200, ICC/IF: 1:50-1:100
Reactivity:	Human, Mouse, Rat
Immunogen:	Recombinant fusion protein containing a sequence corresponding to amino acids 1043-1242 of human IRS1 (P35568).
Sequence:	SPTGPQGAAELAAHSSLLGGPQGPGGMSAFTRVNLSPNRNQSAKVIRADPQGCRRRHS SETFSSTPSATRVGNTVPFGAGAAVGGGGSSSSSEDVKRHSSASFENVWLRPGELGG APKEPAKLCGAAGGLENGLNIDLDLVKDFKQCPQECTPEPQPPPPPPHQPLGSGES SSTRRSSEDL SAYASISFQKQPEDRQ
Host:	Rabbit
Clonality:	Polyclonal
Isotype:	IgG
Conjugate:	Unconjugated
Purification:	Affinity purification.
Molecular Weight:	180 kDa
Product Form:	Liquid
Formulation:	Supplied in Phosphate Buffered Saline, pH 7.3, with 50% Glycerol and 0.05% Proclin 300.
Storage:	Shipped at 4°C. Upon delivery aliquot and store at -20°C. Avoid freeze / thaw cycles.
Disclaimer:	This product is for research use only. It is not intended for diagnostic or therapeutic use.

Anti-IRS1 Antibody (A88568)

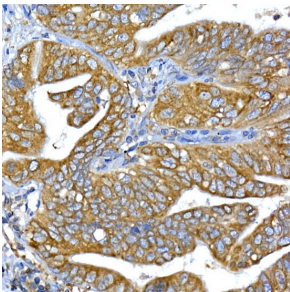
Images:



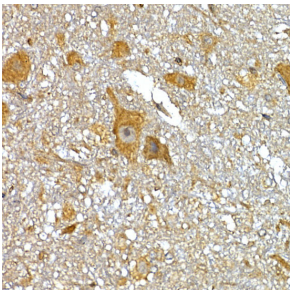
Western blot analysis of extracts of various cell lines, using Anti-IRS1 Antibody (A88568) at 1:1,000 dilution. The secondary antibody was Goat Anti-Rabbit IgG H&L Antibody (HRP) at 1:10,000 dilution. Lysates/proteins were present at 25 μ g per lane. The blocking buffer used was 3% non-fat dry milk in TBST. Detection was with a ECL Basic Kit. Exposure time: 1s.



Western blot analysis of extracts of 293T cells, using Anti-IRS1 Antibody (A88568) at 1:1,000 dilution. The secondary antibody was Goat Anti-Rabbit IgG H&L Antibody (HRP) at 1:10,000 dilution. Lysates/proteins were present at 25 μ g per lane. The blocking buffer used was 3% non-fat dry milk in TBST. Detection was with a ECL Basic Kit. Exposure time: 90s.



Immunohistochemistry analysis of paraffin-embedded human lung cancer using Anti-IRS1 Antibody (A88568) at a dilution of 1:100 (40x lens). Perform high pressure antigen retrieval with 10 mM citrate buffer pH 6.0 before commencing with IHC staining protocol.



Immunohistochemistry analysis of paraffin-embedded mouse spinal cord using Anti-IRS1 Antibody (A88568) at a dilution of 1:100 (40x lens). Perform high pressure antigen retrieval with 10 mM citrate buffer pH 6.0 before commencing with IHC staining protocol.