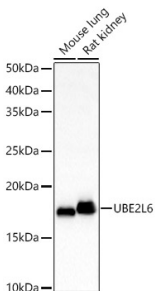


## Anti-Ube2L6 Antibody (A88581)

### Specifications:

Name:	Anti-Ube2L6 Antibody
Description:	Rabbit polyclonal antibody to Ube2L6.
Applications:	WB, ICC/IF
Recommended Dilutions:	WB: 1:100-1:500, ICC/IF: 1:50-1:200
Reactivity:	Human, Mouse, Rat
Immunogen:	A synthetic peptide corresponding to a sequence within amino acids 50 to the C-terminus of human UBE2L6 (NP_004214.1).
Sequence:	AFNLRISFPPEYPFKPPMIKFTTKIYHPNVDENGQICLPIISSENWKPCTKTCQVLEA LNVLVNRPNIREPLRMDLADLLTQNPELFRKNAEEFTLRFGVDRPS
Host:	Rabbit
Clonality:	Polyclonal
Isotype:	IgG
Conjugate:	Unconjugated
Purification:	Affinity purification.
Molecular Weight:	18 kDa
Product Form:	Liquid
Formulation:	Supplied in Phosphate Buffered Saline, pH 7.3, with 50% Glycerol and 0.01% Thiomersal.
Storage:	Shipped at 4°C. Upon delivery aliquot and store at -20°C. Avoid freeze / thaw cycles.
Disclaimer:	This product is for research use only. It is not intended for diagnostic or therapeutic use.

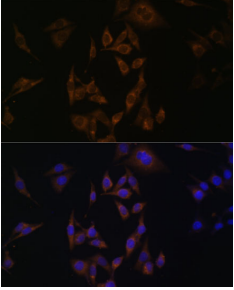
### Images:



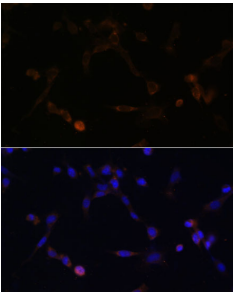
Western blot analysis of various lysates, using Anti-Ube2L6 Antibody (A88581) at 1:500 dilution. The secondary antibody was Goat Anti-Rabbit IgG H&L Antibody (HRP) at 1:10,000 dilution. Lysates/proteins were present at 25µg per lane. The blocking buffer used was 3% non-fat dry milk in TBST. Detection was with a ECL Basic Kit. Exposure time: 30s.

## Anti-Ube2L6 Antibody (A88581)

Images continued:



Immunofluorescence analysis of HeLa cells using Anti-Ube2L6 Antibody (A88581) at a dilution of 1:100. DAPI was used to stain the cell nuclei (blue).



Immunofluorescence analysis of NIH/3T3 cells using Anti-Ube2L6 Antibody (A88581) at a dilution of 1:100. DAPI was used to stain the cell nuclei (blue).