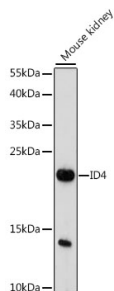


Anti-ID4 Antibody (A88673)

Specifications:

Name:	Anti-ID4 Antibody
Description:	Rabbit polyclonal antibody to ID4.
Applications:	WB
Recommended Dilutions:	WB: 1:500-1:2,000
Reactivity:	Mouse, Rat
Immunogen:	A synthetic peptide corresponding to a sequence within amino acids 1-100 of human ID4 (NP_001537.1).
Sequence:	MKAVSPVRPSGRKAPSGCGGGELALRCLAEHGHSLLGGSAAAAAAAAAARCKAAEAAAD EPALCLQCDMNDYCYSRLRRLVPTIPPNNKKVSKVEILQHVIDY
Host:	Rabbit
Clonality:	Polyclonal
Isotype:	IgG
Conjugate:	Unconjugated
Purification:	Affinity purification.
Molecular Weight:	20 kDa
Product Form:	Liquid
Formulation:	Supplied in Phosphate Buffered Saline, pH 7.3, with 50% Glycerol and 0.01% Thiomersal.
Storage:	Shipped at 4°C. Upon delivery aliquot and store at -20°C. Avoid freeze / thaw cycles.
Disclaimer:	This product is for research use only. It is not intended for diagnostic or therapeutic use.

Images:



Western blot analysis of extracts of mouse kidney, using Anti-ID4 Antibody (A88673) at 1:1,000 dilution. The secondary antibody was Goat Anti-Rabbit IgG H&L Antibody (HRP) at 1:10,000 dilution. Lysates/proteins were present at 25µg per lane. The blocking buffer used was 3% non-fat dry milk in TBST. Detection was with a ECL Enhanced Kit (RM00021). Exposure time: 180s.