

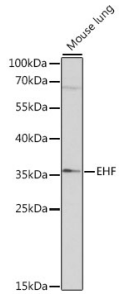
Anti-EHF Antibody (A89362)

Specifications:

Name:	Anti-EHF Antibody
Description:	Rabbit polyclonal antibody to EHF.
Applications:	WB
Recommended Dilutions:	WB: 1:500-1:2,000
Reactivity:	Mouse
Immunogen:	Recombinant fusion protein containing a sequence corresponding to amino acids 1-210 of human EHF (NP_036285.2).
Sequence:	MILEGGGVMNLPGNLLHQPPAWTDSYSTCNVSSGFFGGQWHEIHPQYWTKYQVWEW LQHLLDTNQLDANCIPFQEFDINGEHLCSMSLQEFTRAAGTAGQLLYSNLQHLKWNGQ CSSDLFQSTHNVIVKTEQTEPSIMNTWKDENLYDTNYGSTVDLLDSKTFCRAQISMT TTSHPVAESPDMKKEQDPPAKCHTKKHNPGRGTHLW
Host:	Rabbit
Clonality:	Polyclonal
Isotype:	IgG
Conjugate:	Unconjugated
Purification:	Affinity purification.
Molecular Weight:	35 kDa
Product Form:	Liquid
Formulation:	Supplied in Phosphate Buffered Saline, pH 7.3, with 50% Glycerol and 0.02% Sodium Azide.
Storage:	Shipped at 4°C. Upon delivery aliquot and store at -20°C. Avoid freeze / thaw cycles.
Disclaimer:	This product is for research use only. It is not intended for diagnostic or therapeutic use.

Anti-EHF Antibody (A89362)

Images:



Western blot analysis of extracts of mouse lung, using Anti-EHF Antibody (A89362) at 1:1,000 dilution. The secondary antibody was Goat Anti-Rabbit IgG H&L Antibody (HRP) at 1:10,000 dilution. Lysates/proteins were present at 25 μ g per lane. The blocking buffer used was 3% non-fat dry milk in TBST. Detection was with a ECL Enhanced Kit (RM00021). Exposure time: 90s.