

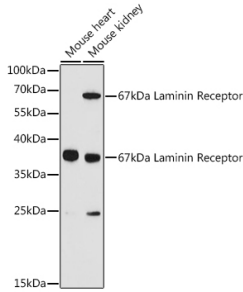
## Anti-67kDa Laminin Receptor Antibody (A89623)

### Specifications:

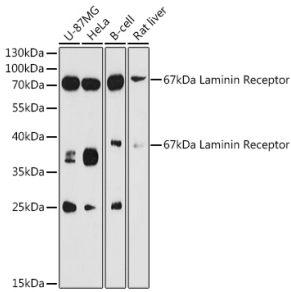
Name:	Anti-67kDa Laminin Receptor Antibody
Description:	Rabbit polyclonal antibody to 67kDa Laminin Receptor.
Applications:	WB, ICC/IF
Recommended Dilutions:	WB: 1:1,000-1:5,000, ICC/IF: 1:50-1:200
Reactivity:	Human, Mouse, Rat
Immunogen:	Recombinant fusion protein containing a sequence corresponding to amino acids 1-295 of human 67kDa Laminin Receptor (NP_002286.2).
Sequence:	MSGALDVLQMKEEDVLKFLAAGTHLGGTNLDFQMEQYIYKRKSDGIYIINLKRTWEKL LLAARAIVAIENPADSVISSRNTGQRAVLKFAAATGATPIAGRFTPGTFTNQIQAAF REPRLLVVTDPRADHQPLTEASYVNLPTIALCNTDSPLRYVDIAIPCNNKGAHSVGLM WWMLAREVLRMRGTISREHPWEVMPDLYFYRDPEEIEKEEQAAAEKAVTKEEFQGEWT APAPEFTATQPEVADWSEGVQVPSVPIQQFPTEDWSAQPATEDWSAAPTAAQATEWVGA TTDWS
Host:	Rabbit
Clonality:	Polyclonal
Isotype:	IgG
Conjugate:	Unconjugated
Purification:	Affinity purification.
Molecular Weight:	37 kDa / 67 kDa
Product Form:	Liquid
Formulation:	Supplied in Phosphate Buffered Saline, pH 7.3, with 50% Glycerol and 0.01% Thiomersal.
Storage:	Shipped at 4°C. Upon delivery aliquot and store at -20°C. Avoid freeze / thaw cycles.
Disclaimer:	This product is for research use only. It is not intended for diagnostic or therapeutic use.

## Anti-67kDa Laminin Receptor Antibody (A89623)

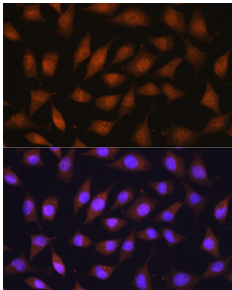
### Images:



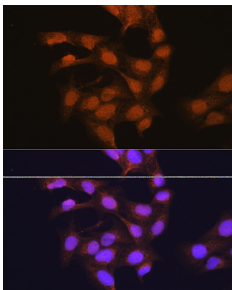
Western blot analysis of extracts of various cell lines, using Anti-67kDa Laminin Receptor Antibody (A89623) at 1:3,000 dilution. The secondary antibody was Goat Anti-Rabbit IgG H&L Antibody (HRP) at 1:10,000 dilution. Lysates/proteins were present at 25µg per lane. The blocking buffer used was 3% non-fat dry milk in TBST. Detection was with a ECL Basic Kit. Exposure time: 90s.



Western blot analysis of extracts of various cell lines, using Anti-67kDa Laminin Receptor Antibody (A89623) at 1:3,000 dilution. The secondary antibody was Goat Anti-Rabbit IgG H&L Antibody (HRP) at 1:10,000 dilution. Lysates/proteins were present at 25µg per lane. The blocking buffer used was 3% non-fat dry milk in TBST. Detection was with a ECL Enhanced Kit (RM00021). Exposure time: 90s.



Immunofluorescence analysis of L929 cells using Anti-67kDa Laminin Receptor Antibody (A89623) at a dilution of 1:100 (40x lens). DAPI was used to stain the cell nuclei (blue).



Immunofluorescence analysis of U-2 OS cells using Anti-67kDa Laminin Receptor Antibody (A89623) at a dilution of 1:100 (40x lens). DAPI was used to stain the cell nuclei (blue).