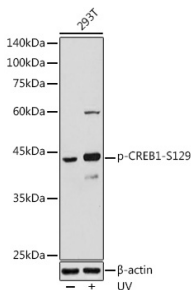


Anti-CREB (phospho Ser129) Antibody (A89856)

Specifications:

Name:	Anti-CREB (phospho Ser129) Antibody
Description:	Rabbit polyclonal antibody to CREB (phospho Ser129).
Applications:	WB
Recommended Dilutions:	WB: 1:100-1:500
Reactivity:	Human, Mouse, Rat
Immunogen:	A synthetic phosphorylated peptide around S129 of human CREB1 (NP_604391.1).
Sequence:	ILSRR
Host:	Rabbit
Clonality:	Polyclonal
Isotype:	IgG
Conjugate:	Unconjugated
Purification:	Affinity purification.
Molecular Weight:	43 kDa
Product Form:	Liquid
Formulation:	Supplied in Phosphate Buffered Saline, pH 7.3, with 50% Glycerol and 0.01% Thiomersal.
Storage:	Shipped at 4°C. Upon delivery aliquot and store at -20°C. Avoid freeze / thaw cycles.
Disclaimer:	This product is for research use only. It is not intended for diagnostic or therapeutic use.

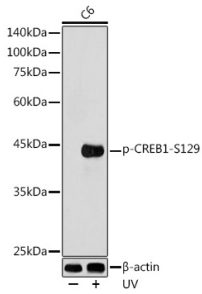
Images:



Western blot analysis of extracts of 293T cells, using Anti-CREB (phospho Ser129) Antibody (A89856) at 1:500 dilution. 293T cells were treated by UV at room temperature for 15-30 minutes. The secondary antibody was Goat Anti-Rabbit IgG H&L Antibody (HRP) at 1:10,000 dilution. Lysates/proteins were present at 25µg per lane. The blocking buffer used was 3% non-fat dry milk in TBST. Detection was with a ECL Basic Kit. Exposure time: 30s.

Anti-CREB (phospho Ser129) Antibody (A89856)

Images continued:



Western blot analysis of extracts of C6 cells, using Anti-CREB (phospho Ser129) Antibody (A89856) at 1:500 dilution. C6 cells were treated by UV at room temperature for 15-30 minutes. The secondary antibody was Goat Anti-Rabbit IgG H&L Antibody (HRP) at 1:10,000 dilution. Lysates/proteins were present at 25 μ g per lane. The blocking buffer used was 3% non-fat dry milk in TBST. Detection was with a ECL Basic Kit. Exposure time: 180s.