

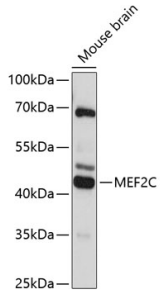
## Anti-MEF2C Antibody (A89975)

### Specifications:

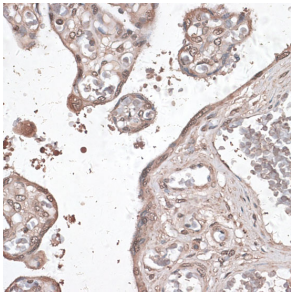
Name:	Anti-MEF2C Antibody
Description:	Rabbit polyclonal antibody to MEF2C.
Applications:	WB, IHC, ICC/IF
Recommended Dilutions:	WB: 1:500-1:2,000, IHC: 1:50-1:100, ICC/IF: 1:50-1:100
Reactivity:	Human, Mouse, Rat
Immunogen:	Recombinant fusion protein containing a sequence corresponding to amino acids 170-380 of human MEF2C (NP_001180279.1).
Sequence:	LPLAHPQLQRNSMSPGVTHRPPSAGNTGGLMGGDLTSGAGTSAGNGYGNPRNSPGLLV SPGNLNKNMQAKSPPPMNLGMNNRKPDRLRVLIPPGSKNTMPSVSEDVDLLNQRINNS QSAQSLATPVVSVATPTLPGQGMGGYPSAISTTYGTEYSLSSADLSSLSGFNTASALH LGSVTGWQQQHLHNMPPSALSQLGACTSTHLSQSSNL
Host:	Rabbit
Clonality:	Polyclonal
Isotype:	IgG
Conjugate:	Unconjugated
Purification:	Affinity purification.
Molecular Weight:	45 kDa
Product Form:	Liquid
Formulation:	Supplied in Phosphate Buffered Saline, pH 7.3, with 50% Glycerol and 0.01% Thiomersal.
Storage:	Shipped at 4°C. Upon delivery aliquot and store at -20°C. Avoid freeze / thaw cycles.
Disclaimer:	This product is for research use only. It is not intended for diagnostic or therapeutic use.

## Anti-MEF2C Antibody (A89975)

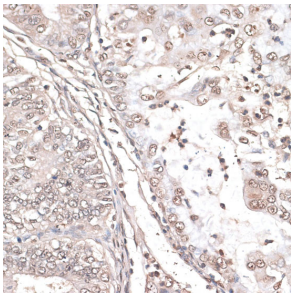
### Images:



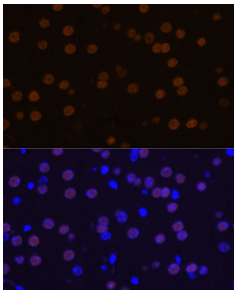
Western blot analysis of extracts of mouse brain, using Anti-MEF2C Antibody (A89975) at 1:3,000 dilution. The secondary antibody was Goat Anti-Rabbit IgG H&L Antibody (HRP) at 1:10,000 dilution. Lysates/proteins were present at 25 $\mu$ g per lane. The blocking buffer used was 3% non-fat dry milk in TBST. Detection was with a ECL Basic Kit. Exposure time: 90s.



Immunohistochemistry analysis of paraffin-embedded human placenta using Anti-MEF2C Antibody (A89975) at a dilution of 1:100 (40x lens). Perform microwave antigen retrieval with 10 mM PBS buffer pH 7.2 before commencing with IHC staining protocol.



Immunohistochemistry analysis of paraffin-embedded human endometrium cancer using Anti-MEF2C Antibody (A89975) at a dilution of 1:100 (40x lens). Perform microwave antigen retrieval with 10 mM PBS buffer pH 7.2 before commencing with IHC staining protocol.



Immunofluorescence analysis of mouse brain using Anti-MEF2C Antibody (A89975) at a dilution of 1:100 (40x lens). DAPI was used to stain the cell nuclei (blue).