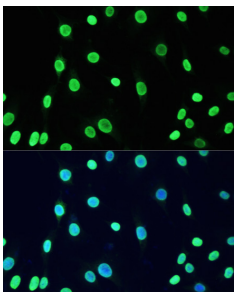


# Anti-Dnmt1 (acetyl Lys1127 + Lys1129 + Lys1131 + Lys1133) Antibody (A9723)

## Specifications:

Name:	Anti-Dnmt1 (acetyl Lys1127 + Lys1129 + Lys1131 + Lys1133) Antibody
Description:	Rabbit polyclonal antibody to Dnmt1 (acetyl Lys1127 + Lys1129 + Lys1131 + Lys1133).
Applications:	IHC, ICC/IF
Recommended Dilutions:	IHC: 1:50-1:100, ICC/IF: 1:50-1:100
Reactivity:	Human, Mouse, Rat
Immunogen:	A synthetic acetylated peptide around K1127 & K1129 & K1131 & K1133 of human DNMT1 (NP_001124295.1).
Sequence:	KGKGGKGGK
Host:	Rabbit
Clonality:	Polyclonal
Isotype:	IgG
Conjugate:	Unconjugated
Purification:	Affinity purification.
Product Form:	Liquid
Formulation:	Supplied in Phosphate Buffered Saline, pH 7.3, with 50% Glycerol and 0.01% Thiomersal.
Storage:	Shipped at 4°C. Upon delivery aliquot and store at -20°C. Avoid freeze / thaw cycles.
Disclaimer:	This product is for research use only. It is not intended for diagnostic or therapeutic use.

## Images:



Immunofluorescence analysis of C6 cells using Anti-Dnmt1 (acetyl Lys1127 + Lys1129 + Lys1131 + Lys1133) Antibody (A9723) at a dilution of 1:100. DAPI was used to stain the cell nuclei (blue).