

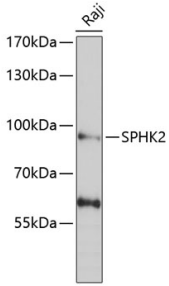
Anti-SPHK2 Antibody (A9987)

Specifications:

| | |
|------------------------|---|
| Name: | Anti-SPHK2 Antibody |
| Description: | Rabbit polyclonal antibody to SPHK2. |
| Applications: | WB, IHC |
| Recommended Dilutions: | WB: 1:500-1:2,000, IHC: 1:50-1:200 |
| Reactivity: | Human, Mouse, Rat |
| Immunogen: | Recombinant fusion protein containing a sequence corresponding to amino acids 1-165 of human SPHK2 (NP_001191088.1). |
| Sequence: | MNGHLEAEEQQDQRPDQELTGSWGHGPRSTLVRAKAMAPPPPPLAASTPLLHGFEFGSY PARGPRFALTLTSQALHIQRLRPKPEARPRGGLVPLAEVSGCCTLRSRSPSDSAAYFC IYTYPRGRRGARRRATRTRFRADGAATYEENRAEAQRWATALTCLLRGLP |
| Host: | Rabbit |
| Clonality: | Polyclonal |
| Isotype: | IgG |
| Conjugate: | Unconjugated |
| Purification: | Affinity purification. |
| Molecular Weight: | 73 kDa |
| Product Form: | Liquid |
| Formulation: | Supplied in Phosphate Buffered Saline, pH 7.3, with 50% Glycerol and 0.02% Sodium Azide. |
| Storage: | Shipped at 4°C. Upon delivery aliquot and store at -20°C. Avoid freeze / thaw cycles. |
| Disclaimer: | This product is for research use only. It is not intended for diagnostic or therapeutic use. |

Anti-SPHK2 Antibody (A9987)

Images:



Western blot analysis of extracts of Raji cells, using Anti-SPHK2 Antibody (A9987) at 1:1,000 dilution. The secondary antibody was Goat Anti-Rabbit IgG H&L Antibody (HRP) at 1:10,000 dilution. Lysates/proteins were present at 25 μ g per lane. The blocking buffer used was 3% non-fat dry milk in TBST. Detection was with a ECL Basic Kit. Exposure time: 90s.