

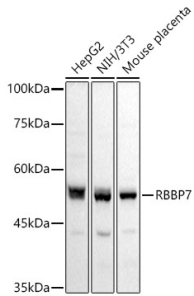
## Anti-RBBP7 Antibody (A90109)

### Specifications:

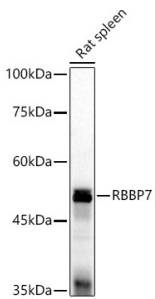
Name:	Anti-RBBP7 Antibody
Description:	Rabbit polyclonal antibody to RBBP7.
Applications:	WB, ICC/IF, IP, ChIP
Recommended Dilutions:	WB: 1:100-1:500, ICC/IF: 1:50-1:200, ChIP: 1:50-1:200
Reactivity:	Human, Mouse, Rat
Immunogen:	Recombinant fusion protein containing a sequence corresponding to amino acids 1-230 of human RbAp46/RBBP7 (NP_002884.1).
Sequence:	MASKEMFEDTVEERVINEEYKIWKKNTPFLYDLVMTHALQWPSLTVQWLPEVTKPEGK DYALHWLVLGHTSDEQNHVVARVHIPNDDAQFDASHCDSKGEFGGFGSVTGKIEC EIKINHEGEVNRARYMPQNPHEIATKTPSSDVLVFDYTKHPAKPDPSGECNPDRLRLRG HQKEGYGLSWNSNLSGHLLSASDDHTVCLWDINAGPKEGKIVDAKAIFTGHSAVVE
Host:	Rabbit
Clonality:	Polyclonal
Isotype:	IgG
Conjugate:	Unconjugated
Purification:	Affinity purification.
Molecular Weight:	48 kDa
Product Form:	Liquid
Formulation:	Supplied in Phosphate Buffered Saline, pH 7.3, with 50% Glycerol and 0.05% Proclin 300.
Storage:	Shipped at 4°C. Upon delivery aliquot and store at -20°C. Avoid freeze / thaw cycles.
Disclaimer:	This product is for research use only. It is not intended for diagnostic or therapeutic use.

## Anti-RBBP7 Antibody (A90109)

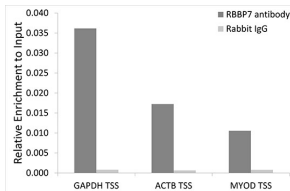
### Images:



Western blot analysis of extracts of various cell lines, using Anti-RBBP7 Antibody (A90109) at 1:500 dilution. The secondary antibody was Goat Anti-Rabbit IgG H&L Antibody (HRP) at 1:10,000 dilution. Lysates/proteins were present at 25 $\mu$ g per lane. The blocking buffer used was 3% non-fat dry milk in TBST. Detection was with a ECL Basic Kit. Exposure time: 3s.



Western blot analysis of extracts of Rat spleen, using Anti-RBBP7 Antibody (A90109) at 1:500 dilution. The secondary antibody was Goat Anti-Rabbit IgG H&L Antibody (HRP) at 1:10,000 dilution. Lysates/proteins were present at 25 $\mu$ g per lane. The blocking buffer used was 3% non-fat dry milk in TBST. Detection was with a ECL Basic Kit. Exposure time: 30s.



Chromatin immunoprecipitation (ChIP) analysis of extracts of 293T cells, using Anti-RBBP7 Antibody (A90109) and Rabbit IgG. The amount of immunoprecipitated DNA was checked by quantitative PCR. Histogram was constructed by the ratios of the immunoprecipitated DNA to the input.