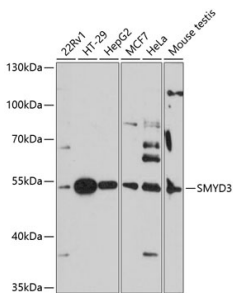


## Anti-SMYD3 Antibody (A90155)

### Specifications:

Name:	Anti-SMYD3 Antibody
Description:	Rabbit polyclonal antibody to SMYD3.
Applications:	WB, IHC, ICC/IF
Recommended Dilutions:	WB: 1:500-1:2,000, IHC: 1:50-1:200, ICC/IF: 1:50-1:200
Reactivity:	Human, Mouse, Rat
Immunogen:	A synthetic peptide corresponding to a sequence within amino acids 50-150 of human SMYD3 (NP_001161212.1).
Sequence:	DRCLLGKEKLMRCSQCRVAKYCSAKCQKKAWPDHKRECKCLKSCKPRYPDPSVRLGLGRVVFKLMDGAPSESEKLYSFYDLESNINKLTEDKKEGLRQLVMT
Host:	Rabbit
Clonality:	Polyclonal
Isotype:	IgG
Conjugate:	Unconjugated
Purification:	Affinity purification.
Molecular Weight:	49 kDa
Product Form:	Liquid
Formulation:	Supplied in Phosphate Buffered Saline, pH 7.3, with 50% Glycerol and 0.01% Thiomersal.
Storage:	Shipped at 4°C. Upon delivery aliquot and store at -20°C. Avoid freeze / thaw cycles.
Disclaimer:	This product is for research use only. It is not intended for diagnostic or therapeutic use.

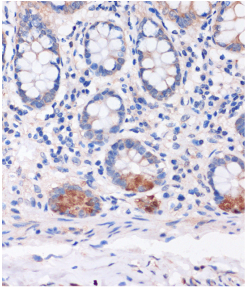
### Images:



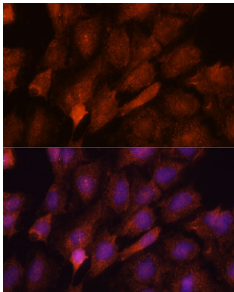
Western blot analysis of extracts of various cell lines, using Anti-SMYD3 Antibody (A90155) at 1:3,000 dilution. The secondary antibody was Goat Anti-Rabbit IgG H&L Antibody (HRP) at 1:10,000 dilution. Lysates/proteins were present at 25µg per lane. The blocking buffer used was 3% non-fat dry milk in TBST. Detection was with a ECL Basic Kit. Exposure time: 90s.

## Anti-SMYD3 Antibody (A90155)

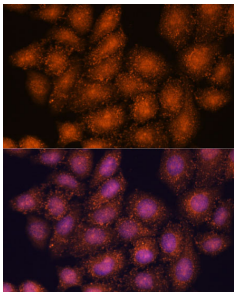
Images continued:



Immunohistochemistry analysis of paraffin-embedded human colon tissue using Anti-SMYD3 Antibody (A90155) at a dilution of 1:100 (40x lens). Perform microwave antigen retrieval with 10 mM PBS buffer pH 7.2 before commencing with IHC staining protocol.



Immunofluorescence analysis of C6 cells using Anti-SMYD3 Antibody (A90155) at a dilution of 1:100. DAPI was used to stain the cell nuclei (blue).



Immunofluorescence analysis of HeLa cells using Anti-SMYD3 Antibody (A90155) at a dilution of 1:100. DAPI was used to stain the cell nuclei (blue).