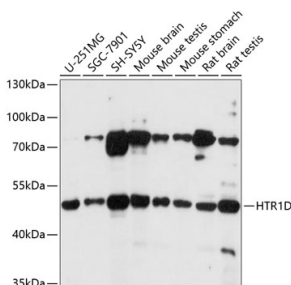


## Anti-5HT1D Receptor Antibody (A90183)

### Specifications:

|                        |   |
|------------------------|---|
| Name:                  | Anti-5HT1D Receptor Antibody  |
| Description:           | Rabbit polyclonal antibody to 5HT1D Receptor.   |
| Applications:          | WB, IHC   |
| Recommended Dilutions: | WB: 1:500-1:2,000, IHC: 1:100-1:200   |
| Reactivity:            | Human, Mouse, Rat   |
| Immunogen:             | A synthetic peptide corresponding to a sequence within amino acids 150-250 of human HTR1D (NP_000855.1).  |
| Sequence:              | RTAGHAATMIAIVWAISICISIPPLFWRQAKAQEEMSDCLVNTSQISYTIYSTCGAFY<br>IPSVLLIILYGRIYRAARNRILNPPSLYGKRFTTAHLITGSAG |
| Host:                  | Rabbit  |
| Clonality:             | Polyclonal  |
| Isotype:               | IgG   |
| Conjugate:             | Unconjugated  |
| Purification:          | Affinity purification.  |
| Molecular Weight:      | 50 kDa  |
| Product Form:          | Liquid  |
| Formulation:           | Supplied in Phosphate Buffered Saline, pH 7.3, with 50% Glycerol and 0.01% Thiomersal.                    |
| Storage:               | Shipped at 4°C. Upon delivery aliquot and store at -20°C. Avoid freeze / thaw cycles.                     |
| Disclaimer:            | This product is for research use only. It is not intended for diagnostic or therapeutic use.              |

### Images:



Western blot analysis of extracts of various cell lines, using Anti-5HT1D Receptor Antibody (A90183) at 1:1,000 dilution. The secondary antibody was Goat Anti-Rabbit IgG H&L Antibody (HRP) at 1:10,000 dilution. Lysates/proteins were present at 25µg per lane. The blocking buffer used was 3% non-fat dry milk in TBST. Detection was with a ECL Basic Kit. Exposure time: 10s.