

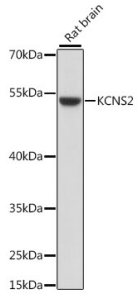
## Anti-KCNS2 Antibody (A90405)

### Specifications:

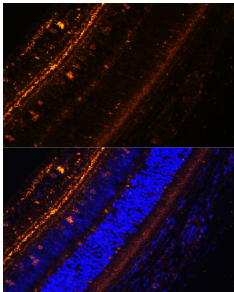
Name:	Anti-KCNS2 Antibody
Description:	Rabbit polyclonal antibody to KCNS2.
Applications:	WB, IHC, ICC/IF
Recommended Dilutions:	WB: 1:500-1:2,000, IHC: 1:50-1:100, ICC/IF: 1:50-1:100
Reactivity:	Human, Mouse, Rat
Immunogen:	Recombinant fusion protein containing a sequence corresponding to amino acids 1-187 of human KCNS2 (NP_065748.1).
Sequence:	MTGQSLWDVSEANVEDGEIRINVGGFKRRLRSHTLLRFPETRLGRLLLCHSREAI LEL CDDYDDVQREFYFDRNPELFPYVLHFYHTGKLHVMAELCVSFSQEI EYWGINEFFID SCCSYSYHGRKVEPEQEKWDEQSDQESTTSSFDEILAFYNDASKFDGQPLGNFRRQLW LALDNPGYSVLSR
Host:	Rabbit
Clonality:	Polyclonal
Isotype:	IgG
Conjugate:	Unconjugated
Purification:	Affinity purification.
Molecular Weight:	54 kDa
Product Form:	Liquid
Formulation:	Supplied in Phosphate Buffered Saline, pH 7.3, with 50% Glycerol and 0.01% Thiomersal.
Storage:	Shipped at 4°C. Upon delivery aliquot and store at -20°C. Avoid freeze / thaw cycles.
Disclaimer:	This product is for research use only. It is not intended for diagnostic or therapeutic use.

## Anti-KCNS2 Antibody (A90405)

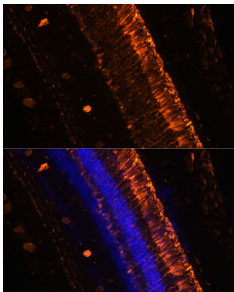
### Images:



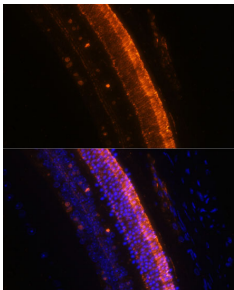
Western blot analysis of extracts of rat brain, using Anti-KCNS2 Antibody (A90405) at 1:1,000 dilution. The secondary antibody was Goat Anti-Rabbit IgG H&L Antibody (HRP) at 1:10,000 dilution. Lysates/proteins were present at 25 $\mu$ g per lane. The blocking buffer used was 3% non-fat dry milk in TBST. Detection was with a ECL Basic Kit. Exposure time: 90s.



Immunofluorescence analysis of rat eye using Anti-KCNS2 Antibody (A90405) at a dilution of 1:100 (40x lens). DAPI was used to stain the cell nuclei (blue).



Immunofluorescence analysis of mouse eye using Anti-KCNS2 Antibody (A90405) at a dilution of 1:100 (20x lens). DAPI was used to stain the cell nuclei (blue).



Immunofluorescence analysis of mouse eye using Anti-KCNS2 Antibody (A90405) at a dilution of 1:100 (40x lens). DAPI was used to stain the cell nuclei (blue).