

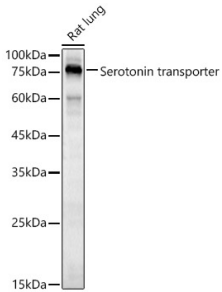
## Anti-Serotonin transporter Antibody (A90919)

### Specifications:

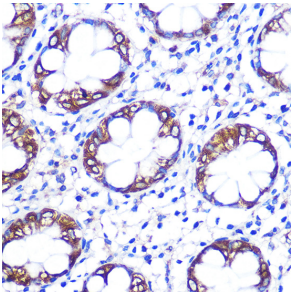
Name:	Anti-Serotonin transporter Antibody
Description:	Rabbit polyclonal antibody to Serotonin transporter.
Applications:	WB, IHC
Recommended Dilutions:	WB: 1:100-1:500, IHC: 1:50-1:200
Reactivity:	Human, Mouse, Rat
Immunogen:	A synthetic peptide corresponding to a sequence within amino acids 500 to the C-terminus of human Serotonin transporter (NP_001036.1).
Sequence:	AVLTVALIEAVAVSWFYGITQFCRDVKEMLGFSFGWFWRICWVAISPLFLFIICSFL MSPPQLRLFQYNYPYWSIILGYCIGTSSFICIPTYIAYRLITPGTFKERIIKSITPE TPTEIPCGDIRLNAV
Host:	Rabbit
Clonality:	Polyclonal
Isotype:	IgG
Conjugate:	Unconjugated
Purification:	Affinity purification.
Molecular Weight:	70 kDa
Product Form:	Liquid
Formulation:	Supplied in Phosphate Buffered Saline, pH 7.3, with 50% Glycerol and 0.05% Proclin 300.
Storage:	Shipped at 4°C. Upon delivery aliquot and store at -20°C. Avoid freeze / thaw cycles.
Disclaimer:	This product is for research use only. It is not intended for diagnostic or therapeutic use.

## Anti-Serotonin transporter Antibody (A90919)

### Images:



Western blot analysis of Rat lung, using Anti-Serotonin transporter Antibody (A90919) at 1:500 dilution. The secondary antibody was Goat Anti-Rabbit IgG H&L Antibody (HRP) at 1:10,000 dilution. Lysates/proteins were present at 25 $\mu$ g per lane. The blocking buffer used was 3% non-fat dry milk in TBST. Detection was with a ECL Basic Kit. Exposure time: 20s.



Immunohistochemistry analysis of paraffin-embedded human colon tissue using Anti-Serotonin transporter Antibody (A90919) at a dilution of 1:100 (40x lens). Perform microwave antigen retrieval with 10 mM PBS buffer pH 7.2 before commencing with IHC staining protocol.