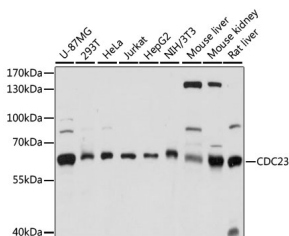


## Anti-Cdc23 Antibody (A90921)

### Specifications:

Name:	Anti-Cdc23 Antibody
Description:	Rabbit polyclonal antibody to Cdc23.
Applications:	WB, IHC
Recommended Dilutions:	WB: 1:500-1:2,000, IHC: 1:100-1:200
Reactivity:	Human, Mouse, Rat
Immunogen:	A synthetic peptide corresponding to a sequence within amino acids 50-150 of human CDC23 (NP_004652.2).
Sequence:	HSSKWSAELAFSLPALPLAELQPPPPITEEDAQDMDAYTLAKAYFDVKEYDRAAHFLH GCNSKKAYFLYMYSRYLSGEEKKKDDETVDSLGPLEKGQVKNEA
Host:	Rabbit
Clonality:	Polyclonal
Isotype:	IgG
Conjugate:	Unconjugated
Purification:	Affinity purification.
Molecular Weight:	69 kDa
Product Form:	Liquid
Formulation:	Supplied in Phosphate Buffered Saline, pH 7.3, with 50% Glycerol and 0.01% Thiomersal.
Storage:	Shipped at 4°C. Upon delivery aliquot and store at -20°C. Avoid freeze / thaw cycles.
Disclaimer:	This product is for research use only. It is not intended for diagnostic or therapeutic use.

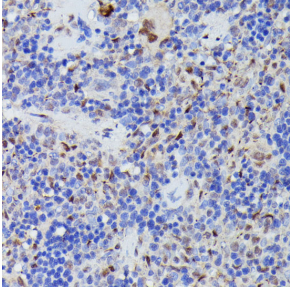
### Images:



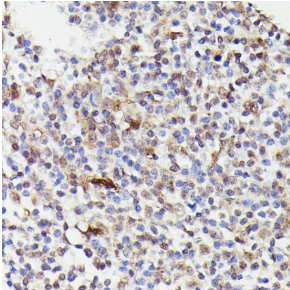
Western blot analysis of extracts of various cell lines, using Anti-Cdc23 Antibody (A90921) at 1:1,000 dilution. The secondary antibody was Goat Anti-Rabbit IgG H&L Antibody (HRP) at 1:10,000 dilution. Lysates/proteins were present at 25µg per lane. The blocking buffer used was 3% non-fat dry milk in TBST. Detection was with a ECL Basic Kit. Exposure time: 10s.

## Anti-Cdc23 Antibody (A90921)

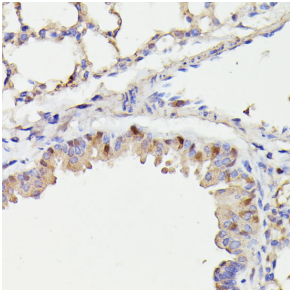
Images continued:



Immunohistochemistry analysis of paraffin-embedded rat spleen using Anti-Cdc23 Antibody (A90921) at a dilution of 1:100 (40x lens).



Immunohistochemistry analysis of paraffin-embedded human tonsil using Anti-Cdc23 Antibody (A90921) at a dilution of 1:100 (40x lens).



Immunohistochemistry analysis of paraffin-embedded mouse lung using Anti-Cdc23 Antibody (A90921) at a dilution of 1:100 (40x lens).