

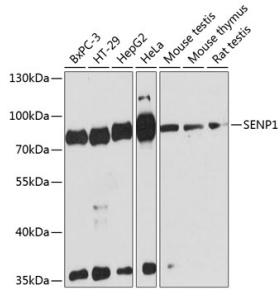
Anti-SENP1 Antibody (A91069)

Specifications:

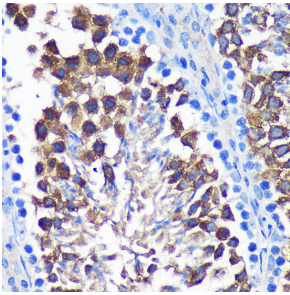
Name:	Anti-SENP1 Antibody
Description:	Rabbit polyclonal antibody to SENP1.
Applications:	WB, IHC
Recommended Dilutions:	WB: 1:500-1:2,000, IHC: 1:50-1:200
Reactivity:	Human, Mouse, Rat
Immunogen:	Recombinant fusion protein containing a sequence corresponding to amino acids 220-420 of human SENP1 (NP_001254523.1).
Sequence:	SRCLSSSKNTLKDSLFKNGNSCASQIIGSDTSSSGSASILTNQEQLSHSVYSLSSYTP DVAFGSKDSGTLHHPHHHSVPHQPDNLAASNTQSEGSDSVILLKVKDSQTPTPSSTF FQAELWIKELTSVYDSRARERLRQIEEQKALALQLQNQRLQEREHSVHDSVELHLRVP LEKEIPVTVVQETQKKGHKLTDESEDF
Host:	Rabbit
Clonality:	Polyclonal
Isotype:	IgG
Conjugate:	Unconjugated
Purification:	Affinity purification.
Molecular Weight:	73 kDa
Product Form:	Liquid
Formulation:	Supplied in Phosphate Buffered Saline, pH 7.3, with 50% Glycerol and 0.01% Thiomersal.
Storage:	Shipped at 4°C. Upon delivery aliquot and store at -20°C. Avoid freeze / thaw cycles.
Disclaimer:	This product is for research use only. It is not intended for diagnostic or therapeutic use.

Anti-SEN1 Antibody (A91069)

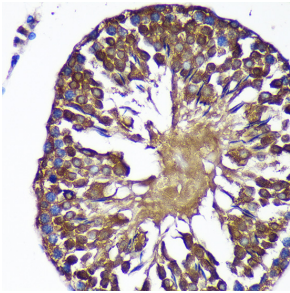
Images:



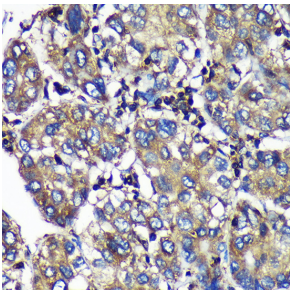
Western blot analysis of extracts of various cell lines, using Anti-SEN1 Antibody (A91069) at 1:3,000 dilution. The secondary antibody was Goat Anti-Rabbit IgG H&L Antibody (HRP) at 1:10,000 dilution. Lysates/proteins were present at 25µg per lane. The blocking buffer used was 3% non-fat dry milk in TBST. Detection was with a ECL Basic Kit. Exposure time: 90s.



Immunohistochemistry analysis of paraffin-embedded mouse testis using Anti-SEN1 Antibody (A91069) at a dilution of 1:100 (40x lens).



Immunohistochemistry analysis of paraffin-embedded rat testis using Anti-SEN1 Antibody (A91069) at a dilution of 1:100 (40x lens).



Immunohistochemistry analysis of paraffin-embedded human liver cancer using Anti-SEN1 Antibody (A91069) at a dilution of 1:100 (40x lens).