

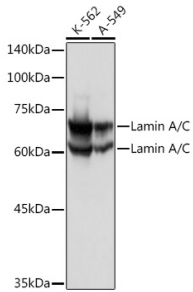
## Anti-Lamin A Antibody (A91083)

### Specifications:

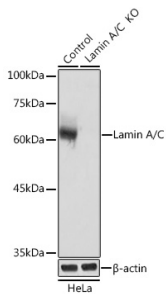
Name:	Anti-Lamin A Antibody
Description:	Rabbit polyclonal antibody to Lamin A.
Applications:	WB, IHC, ICC/IF, IP
Recommended Dilutions:	WB: 1:200-1:1,000, IHC: 1:50-1:200, ICC/IF: 1:50-1:200, IP: 1:500-1:1,000
Reactivity:	Human, Mouse, Rat
Immunogen:	Recombinant fusion protein containing a sequence corresponding to amino acids 403-572 of human Lamin A/C (NP_733821.1).
Sequence:	SSHSSQTQGGGSVTKKRKLESTESRSSFQHARTSGRVAVEEVDEEGKFVRLRNKSNE DQSMGNWQIKRQNGDDPLLTYRFPPKFTLKAGQVVTIWAAGAGATHSPPTDLVWKAQN TWGCGNSLRTALINSTGEEVAMRKLVRSVTVVEDEDEDGDDLLHHHHGSHCSS
Host:	Rabbit
Clonality:	Polyclonal
Isotype:	IgG
Conjugate:	Unconjugated
Purification:	Affinity purification.
Molecular Weight:	63 kDa / 74 kDa
Product Form:	Liquid
Formulation:	Supplied in Phosphate Buffered Saline, pH 7.3, with 50% Glycerol and 0.01% Thiomersal.
Storage:	Shipped at 4°C. Upon delivery aliquot and store at -20°C. Avoid freeze / thaw cycles.
Disclaimer:	This product is for research use only. It is not intended for diagnostic or therapeutic use.

## Anti-Lamin A Antibody (A91083)

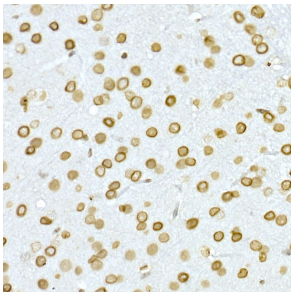
### Images:



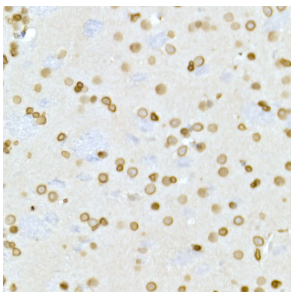
Western blot analysis of extracts of various cell lines, using Anti-Lamin A Antibody (A91083). The secondary antibody was Goat Anti-Rabbit IgG H&L Antibody (HRP) at 1:10,000 dilution. Lysates/proteins were present at 25 $\mu$ g per lane. The blocking buffer used was 3% non-fat dry milk in TBST. Detection was with a ECL Basic Kit.



Western blot analysis of extracts from normal (control) and Lamin A/C Rabbit polyclonal antibody knockout (KO) HeLa cells, using Anti-Lamin A Antibody (A91083). The secondary antibody was Goat Anti-Rabbit IgG H&L Antibody (HRP) at 1:10,000 dilution. Lysates/proteins were present at 25 $\mu$ g per lane. The blocking buffer used was 3% non-fat dry milk in TBST. Detection was with a ECL Basic Kit.



Immunohistochemistry analysis of paraffin-embedded mouse brain using Anti-Lamin A Antibody (A91083) at a dilution of 1:50 (40x lens). Perform high pressure antigen retrieval with 10 mM citrate buffer pH 6.0 before commencing with IHC staining protocol.



Immunohistochemistry analysis of paraffin-embedded rat brain using Anti-Lamin A Antibody (A91083) at a dilution of 1:50 (40x lens). Perform high pressure antigen retrieval with 10 mM citrate buffer pH 6.0 before commencing with IHC staining protocol.