

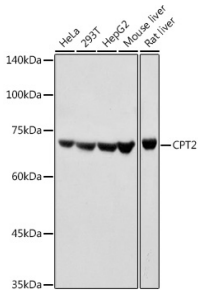
Anti-CPT2 Antibody (A91088)

Specifications:

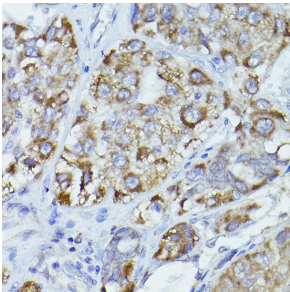
Name:	Anti-CPT2 Antibody
Description:	Rabbit polyclonal antibody to CPT2.
Applications:	WB, IHC, ICC/IF
Recommended Dilutions:	WB: 1:500-1:1,000, IHC: 1:50-1:200, ICC/IF: 1:50-1:200
Reactivity:	Human, Mouse, Rat
Immunogen:	Recombinant fusion protein containing a sequence corresponding to amino acids 404-658 of human CPT2 (NP_000089.1).
Sequence:	ATTDSTVTVQKLNFE ^{LD} ALKTGITAAKEKFDATMKTLTIDCVQFQRGGKEFLKKQKL SPDAVAQLAFQMAFLRQYGQTVATYESCSTA ^{AF} FKHGRTE ^T IRPASVYTKRCSEAFVRE PSRHSAGELQQMMVECSKYHGQLTKEAAMGQGFDRHLFALRH ^L AAAKGIILPELYLDP AYGQINHNVLSTSTLSSPAVNLGGFAPVVS ^D GFVGYAVHDN ^W IGCNVSSYPGRNARE FLQCVEKALED ^M FDAL ^E GKSIKS
Host:	Rabbit
Clonality:	Polyclonal
Isotype:	IgG
Conjugate:	Unconjugated
Purification:	Affinity purification.
Molecular Weight:	72 kDa
Product Form:	Liquid
Formulation:	Supplied in Phosphate Buffered Saline, pH 7.3, with 50% Glycerol and 0.05% Proclin 300.
Storage:	Shipped at 4°C. Upon delivery aliquot and store at -20°C. Avoid freeze / thaw cycles.
Disclaimer:	This product is for research use only. It is not intended for diagnostic or therapeutic use.

Anti-CPT2 Antibody (A91088)

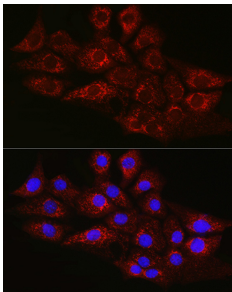
Images:



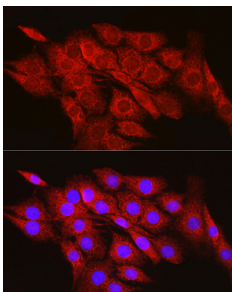
Western blot analysis of extracts of various cell lines, using Anti-CPT2 Antibody (A91088) at 1:1,000 dilution. The secondary antibody was Goat Anti-Rabbit IgG H&L Antibody (HRP) at 1:10,000 dilution. Lysates/proteins were present at 25 μ g per lane. The blocking buffer used was 3% non-fat dry milk in TBST. Detection was with a ECL Basic Kit. Exposure time: 1s.



Immunohistochemistry analysis of paraffin-embedded human liver cancer using Anti-CPT2 Antibody (A91088) at a dilution of 1:100 (40x lens). Perform high pressure antigen retrieval with 10 mM citrate buffer pH 6.0 before commencing with IHC staining protocol.



Immunofluorescence analysis of NIH/3T3 cells using Anti-CPT2 Antibody (A91088) at a dilution of 1:100 (40x lens). DAPI was used to stain the cell nuclei (blue).



Immunofluorescence analysis of PC-12 cells using Anti-CPT2 Antibody (A91088) at a dilution of 1:100 (40x lens). DAPI was used to stain the cell nuclei (blue).