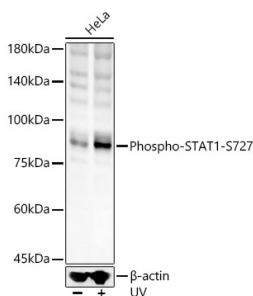


## Anti-STAT1 (phospho Ser727) Antibody (A91373)

### Specifications:

Name:	Anti-STAT1 (phospho Ser727) Antibody
Description:	Rabbit polyclonal antibody to STAT1 (phospho Ser727).
Applications:	WB, IHC, IP
Recommended Dilutions:	WB: 1:500-1:1,000, IHC: 1:50-1:200, IP: 1:50-1:100
Reactivity:	Human, Mouse, Rat
Immunogen:	A synthetic phosphorylated peptide around S727 of human STAT1 (NP_009330.1).
Sequence:	PMSPE
Host:	Rabbit
Clonality:	Polyclonal
Isotype:	IgG
Conjugate:	Unconjugated
Purification:	Affinity purification.
Molecular Weight:	91 kDa
Product Form:	Liquid
Formulation:	Supplied in Phosphate Buffered Saline, pH 7.3, with 50% Glycerol and 0.01% Thiomersal.
Storage:	Shipped at 4°C. Upon delivery aliquot and store at -20°C. Avoid freeze / thaw cycles.
Disclaimer:	This product is for research use only. It is not intended for diagnostic or therapeutic use.

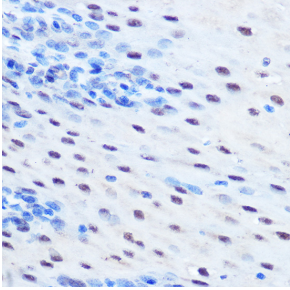
### Images:



Western blot analysis of HeLa, using Anti-STAT1 (phospho Ser727) Antibody (A91373) at 1:1,000 dilution. The secondary antibody was Goat Anti-Rabbit IgG H&L Antibody (HRP) at 1:10,000 dilution. Lysates/proteins were present at 25µg per lane. The blocking buffer used was 3% non-fat dry milk in TBST. Detection was with a ECL Basic Kit. Exposure time: 60s.

## Anti-STAT1 (phospho Ser727) Antibody (A91373)

Images continued:



Immunohistochemistry analysis of paraffin-embedded human esophageal using Anti-STAT1 (phospho Ser727) Antibody (A91373) at a dilution of 1:100 (40x lens). Perform microwave antigen retrieval with 10 mM Tris/EDTA buffer pH 9.0 before commencing with IHC staining protocol.