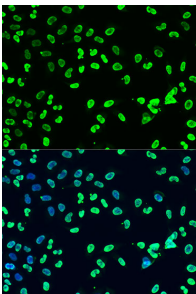


Anti-Dnmt3a (di methyl Lys44) Antibody (A91519)

Specifications:

Name:	Anti-Dnmt3a (di methyl Lys44) Antibody
Description:	Rabbit polyclonal antibody to Dnmt3a (di methyl Lys44).
Applications:	ICC/IF
Recommended Dilutions:	ICC/IF: 1:50-1:200
Reactivity:	Human, Mouse, Rat
Immunogen:	A synthetic dimethylated peptide around K44 of mouse DNMT3A (NP_031898.1).
Sequence:	ARKVG
Host:	Rabbit
Clonality:	Polyclonal
Isotype:	IgG
Conjugate:	Unconjugated
Purification:	Affinity purification.
Product Form:	Liquid
Formulation:	Supplied in Phosphate Buffered Saline, pH 7.3, with 50% Glycerol and 0.02% Sodium Azide.
Storage:	Shipped at 4°C. Upon delivery aliquot and store at -20°C. Avoid freeze / thaw cycles.
Disclaimer:	This product is for research use only. It is not intended for diagnostic or therapeutic use.

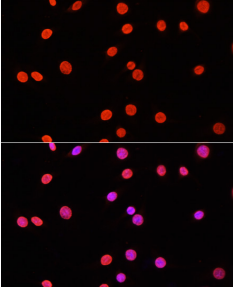
Images:



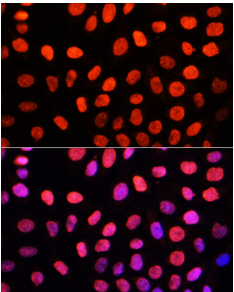
Immunofluorescence analysis of U2OS cells using Anti-Dnmt3a (di methyl Lys44) Antibody (A91519) at a dilution of 1:100. DAPI was used to stain the cell nuclei (blue).

Anti-Dnmt3a (di methyl Lys44) Antibody (A91519)

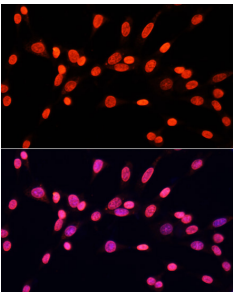
Images continued:



Immunofluorescence analysis of C6 cells using Anti-Dnmt3a (di methyl Lys44) Antibody (A91519) at a dilution of 1:100. DAPI was used to stain the cell nuclei (blue).



Immunofluorescence analysis of HeLa cells using Anti-Dnmt3a (di methyl Lys44) Antibody (A91519) at a dilution of 1:100. DAPI was used to stain the cell nuclei (blue).



Immunofluorescence analysis of NIH/3T3 cells using Anti-Dnmt3a (di methyl Lys44) Antibody (A91519) at a dilution of 1:100. DAPI was used to stain the cell nuclei (blue).