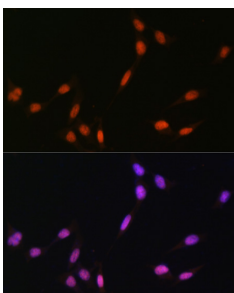


Anti-Histone H4 (mono methyl Lys5) Antibody (A91717)

Specifications:

Name:	Anti-Histone H4 (mono methyl Lys5) Antibody
Description:	Rabbit polyclonal antibody to Histone H4 (mono methyl Lys5).
Applications:	ICC/IF
Recommended Dilutions:	ICC/IF: 1:50-1:200
Reactivity:	Human, Mouse, Rat
Immunogen:	A synthetic monomethylated peptide around K5 of human Histone H4 (NP_003529.1).
Sequence:	RGKGG
Host:	Rabbit
Clonality:	Polyclonal
Isotype:	IgG
Conjugate:	Unconjugated
Purification:	Affinity purification.
Product Form:	Liquid
Formulation:	Supplied in Phosphate Buffered Saline, pH 7.3, with 50% Glycerol and 0.01% Thiomersal.
Storage:	Shipped at 4°C. Upon delivery aliquot and store at -20°C. Avoid freeze / thaw cycles.
Disclaimer:	This product is for research use only. It is not intended for diagnostic or therapeutic use.

Images:



Immunofluorescence analysis of NIH-3T3 cells using Anti-Histone H4 (mono methyl Lys5) Antibody (A91717) at a dilution of 1:100. DAPI was used to stain the cell nuclei (blue).