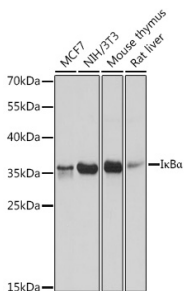


Anti-IKB alpha Antibody (A91723)

Specifications:

Name:	Anti-IKB alpha Antibody
Description:	Rabbit polyclonal antibody to IKB alpha.
Applications:	WB, ICC/IF
Recommended Dilutions:	WB: 1:500-1:2,000, ICC/IF: 1:50-1:200
Reactivity:	Human, Mouse, Rat
Immunogen:	A synthetic peptide corresponding to a sequence within amino acids 200-300 of human I κ B α (NP_065390.1).
Sequence:	ELLVSLGADVNAQEPCNGRTALHLAVDLQNPDLVSLLLKCGADVNRVITYQGYSPLYQLT WGRPSTRIQQQLGQLTLENLQMLPESEDEESYDTESEFTEFTE
Host:	Rabbit
Clonality:	Polyclonal
Isotype:	IgG
Conjugate:	Unconjugated
Purification:	Affinity purification.
Molecular Weight:	36 kDa
Product Form:	Liquid
Formulation:	Supplied in Phosphate Buffered Saline, pH 7.3, with 50% Glycerol and 0.01% Thiomersal.
Storage:	Shipped at 4°C. Upon delivery aliquot and store at -20°C. Avoid freeze / thaw cycles.
Disclaimer:	This product is for research use only. It is not intended for diagnostic or therapeutic use.

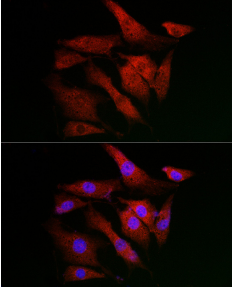
Images:



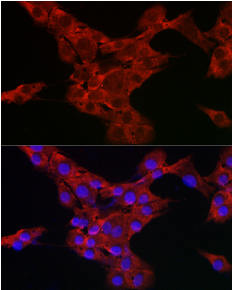
Western blot analysis of extracts of various cell lines, using Anti-IKB alpha Antibody (A91723) at 1:1,000 dilution. The secondary antibody was Goat Anti-Rabbit IgG H&L Antibody (HRP) at 1:10,000 dilution. Lysates/proteins were present at 25 μ g per lane. The blocking buffer used was 3% non-fat dry milk in TBST. Detection was with a ECL Basic Kit. Exposure time: 5s.

Anti-IKB alpha Antibody (A91723)

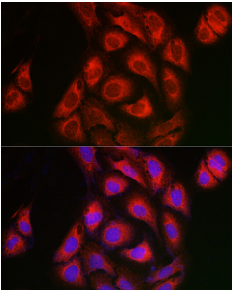
Images continued:



Immunofluorescence analysis of NIH/3T3 cells using Anti-IKB alpha Antibody (A91723) at a dilution of 1:200 (40x lens). DAPI was used to stain the cell nuclei (blue).



Immunofluorescence analysis of PC-12 cells using Anti-IKB alpha Antibody (A91723) at a dilution of 1:200 (40x lens). DAPI was used to stain the cell nuclei (blue).



Immunofluorescence analysis of U2OS cells using Anti-IKB alpha Antibody (A91723) at a dilution of 1:200 (40x lens). DAPI was used to stain the cell nuclei (blue).