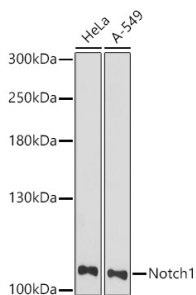


## Anti-Notch1 Antibody (A91725)

### Specifications:

|                        |   |
|------------------------|---|
| Name:                  | Anti-Notch1 Antibody  |
| Description:           | Rabbit polyclonal antibody to Notch1.   |
| Applications:          | WB, ICC/IF  |
| Recommended Dilutions: | WB: 1:1,000-1:5,000, ICC/IF: 1:50-1:200   |
| Reactivity:            | Human, Mouse, Rat   |
| Immunogen:             | A synthetic peptide corresponding to a sequence within amino acids 2350-2450 of human Notch1 (NP_060087.3). |
| Sequence:              | LHSSLAASALSQMMSYQGLPSTRLATQPHLVQTQQVQPQNLQMQQQNLQPANIQQQQS<br>LQPPPPPPQPHLGVSSAASGHLGRSFLSGEPSQADVQPLGPSS   |
| Host:                  | Rabbit  |
| Clonality:             | Polyclonal  |
| Isotype:               | IgG   |
| Conjugate:             | Unconjugated  |
| Purification:          | Affinity purification.  |
| Molecular Weight:      | 110 kDa / 120 kDa   |
| Product Form:          | Liquid  |
| Formulation:           | Supplied in Phosphate Buffered Saline, pH 7.3, with 50% Glycerol and 0.01% Thiomersal.                      |
| Storage:               | Shipped at 4°C. Upon delivery aliquot and store at -20°C. Avoid freeze / thaw cycles.                       |
| Disclaimer:            | This product is for research use only. It is not intended for diagnostic or therapeutic use.                |

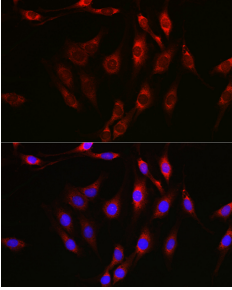
### Images:



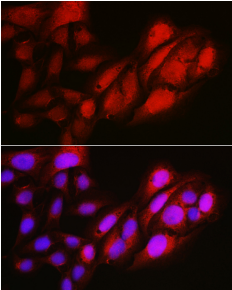
Western blot analysis of extracts of various cell lines, using Anti-Notch1 Antibody (A91725) at 1:3,000 dilution. The secondary antibody was Goat Anti-Rabbit IgG H&L Antibody (HRP) at 1:10,000 dilution. Lysates/proteins were present at 25µg per lane. The blocking buffer used was 3% non-fat dry milk in TBST. Detection was with a ECL Basic Kit. Exposure time: 90s.

## Anti-Notch1 Antibody (A91725)

Images continued:



Immunofluorescence analysis of C6 using Anti-Notch1 Antibody (A91725) at a dilution of 1:100 (40x lens). DAPI was used to stain the cell nuclei (blue).



Immunofluorescence analysis of U2OS using Anti-Notch1 Antibody (A91725) at a dilution of 1:100 (40x lens). DAPI was used to stain the cell nuclei (blue).