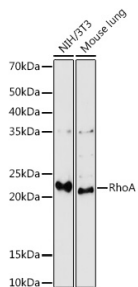


## Anti-RhoA Antibody (A91750)

### Specifications:

Name:	Anti-RhoA Antibody
Description:	Rabbit polyclonal antibody to RhoA.
Applications:	WB, IHC, IP
Recommended Dilutions:	WB: 1:500-1:1,000, IHC: 1:50-1:200, IP: 1:100-1:500
Reactivity:	Human, Mouse, Rat
Immunogen:	A synthetic peptide corresponding to a sequence within amino acids 94-193 of human RhoA (NP_001655.1).
Sequence:	NIPEKWTPEVKHFPCNPVPIILVGNKKDLRNDHTRRELAKMKQEPVKPEEGRDMANRI GAFGYMECSAKTKDGVREVFEMATRAALQARRGKKKSGCLVL
Host:	Rabbit
Clonality:	Polyclonal
Isotype:	IgG
Conjugate:	Unconjugated
Purification:	Affinity purification.
Molecular Weight:	21 kDa
Product Form:	Liquid
Formulation:	Supplied in Phosphate Buffered Saline, pH 7.3, with 50% Glycerol and 0.01% Thiomersal.
Storage:	Shipped at 4°C. Upon delivery aliquot and store at -20°C. Avoid freeze / thaw cycles.
Disclaimer:	This product is for research use only. It is not intended for diagnostic or therapeutic use.

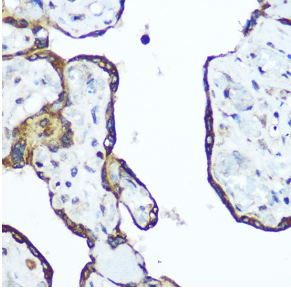
### Images:



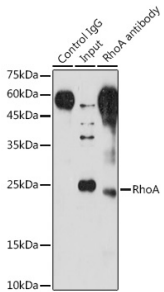
Western blot analysis of extracts of various cell lines, using Anti-RhoA Antibody (A91750) at 1:1,000 dilution. The secondary antibody was Goat Anti-Rabbit IgG H&L Antibody (HRP) at 1:10,000 dilution. Lysates/proteins were present at 25µg per lane. The blocking buffer used was 3% non-fat dry milk in TBST. Detection was with a ECL Enhanced Kit (RM00021). Exposure time: 180s.

## Anti-RhoA Antibody (A91750)

Images continued:



Immunohistochemistry analysis of paraffin-embedded human placenta using Anti-RhoA Antibody (A91750) at a dilution of 1:100 (40x lens). Perform microwave antigen retrieval with 10 mM Tris/EDTA buffer pH 9.0 before commencing with IHC staining protocol.



Immunoprecipitation analysis of 200µg extracts of NIH/3T3 cells using 3µg of Anti-RhoA Antibody (A91750). This Western blot was performed on the immunoprecipitate using Anti-RhoA Antibody (A91750) at a dilution of 1:500.