

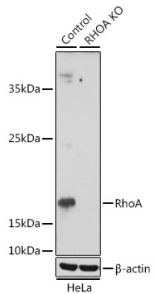
## Anti-RhoA Antibody (A91988)

### Specifications:

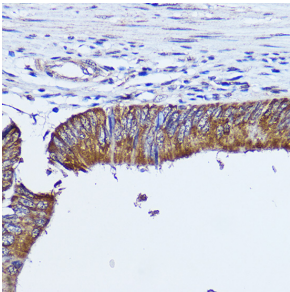
Name:	Anti-RhoA Antibody
Description:	Rabbit polyclonal antibody to RhoA.
Applications:	WB, IHC, ICC/IF
Recommended Dilutions:	WB: 1:500-1:2,000, IHC: 1:100-1:500, ICC/IF: 1:50-1:200
Reactivity:	Human
Immunogen:	Recombinant fusion protein containing a sequence corresponding to amino acids 1-193 of human RhoA (NP_001655.1).
Sequence:	MAAIRKKLVIVGDGACGKTCLLIVFSKDQFPEVYVPTVFENYVADIEVDGKQVELALW DTAGQEDYDRLRPLSYDPTDVILMCFSIDSPDSLENIPEKWTPEVKHFPCPNVPIILVG NKKDLRNDEHTRRELAKMKQEPVKPEEGRDMANRIGAFGYMECSAKTKDGVREVFEMA TRALQARRGKKKSGCLVL
Host:	Rabbit
Clonality:	Polyclonal
Isotype:	IgG
Conjugate:	Unconjugated
Purification:	Affinity purification.
Molecular Weight:	21 kDa
Product Form:	Liquid
Formulation:	Supplied in Phosphate Buffered Saline, pH 7.3, with 50% Glycerol and 0.02% Sodium Azide.
Storage:	Shipped at 4°C. Upon delivery aliquot and store at -20°C. Avoid freeze / thaw cycles.
Disclaimer:	This product is for research use only. It is not intended for diagnostic or therapeutic use.

## Anti-RhoA Antibody (A91988)

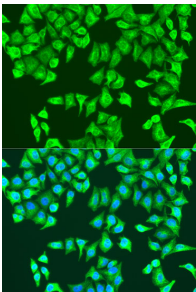
### Images:



Western blot analysis of extracts from normal (control) and RhoA knockout (KO) HeLa cells, using Anti-RhoA Antibody (A91988) at 1:1,000 dilution. The secondary antibody was Goat Anti-Rabbit IgG H&L Antibody (HRP) at 1:10,000 dilution. Lysates/proteins were present at 25µg per lane. The blocking buffer used was 3% non-fat dry milk in TBST. Detection was with a ECL Basic Kit. Exposure time: 3min.



Immunohistochemistry analysis of paraffin-embedded human colon carcinoma tissue using Anti-RhoA Antibody (A91988) at a dilution of 1:300 (40x lens). Perform microwave antigen retrieval with 10 mM PBS buffer pH 7.2 before commencing with IHC staining protocol.



Immunofluorescence analysis of U2OS cells using Anti-RhoA Antibody (A91988) at a dilution of 1:100. DAPI was used to stain the cell nuclei (blue).