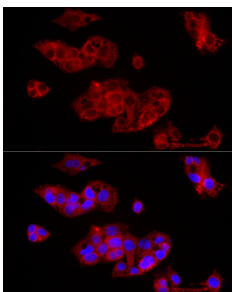


Anti-FGF1 Antibody (A92157)

Specifications:

Name:	Anti-FGF1 Antibody
Description:	Rabbit polyclonal antibody to FGF1.
Applications:	ICC/IF
Recommended Dilutions:	ICC/IF: 1:50-1:200
Reactivity:	Mouse
Immunogen:	Recombinant fusion protein containing a sequence corresponding to amino acids 2-155 of human FGF1 (NP_000791.1).
Sequence:	AEGEITTF TALTEKFNLP PGNYKKPKLLYCSNGGHFLRILPDGTV DGTDRDRSDQHIQL QLSAESVGEVYIKSTETGQYLAMDTDGLLYGSQTPNEECLFLERLEENHYNTYISKKH AEKNWFVGLKKN GSCKRGP RTHYGQKAILFLPLPVSSD
Host:	Rabbit
Clonality:	Polyclonal
Isotype:	IgG
Conjugate:	Unconjugated
Purification:	Affinity purification.
Product Form:	Liquid
Formulation:	Supplied in Phosphate Buffered Saline, pH 7.3, with 50% Glycerol and 0.05% Proclin 300.
Storage:	Shipped at 4°C. Upon delivery aliquot and store at -20°C. Avoid freeze / thaw cycles.
Disclaimer:	This product is for research use only. It is not intended for diagnostic or therapeutic use.

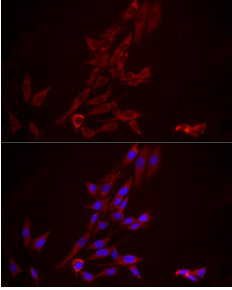
Images:



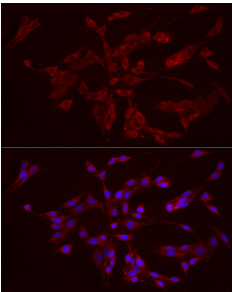
Immunofluorescence analysis of HepG2 cells using Anti-FGF1 Antibody (A92157) at a dilution of 1:100 (40x lens). DAPI was used to stain the cell nuclei (blue).

Anti-FGF1 Antibody (A92157)

Images continued:



Immunofluorescence analysis of NIH/3T3 cells using Anti-FGF1 Antibody (A92157) at a dilution of 1:100 (40x lens). DAPI was used to stain the cell nuclei (blue).



Immunofluorescence analysis of PC-12 cells using Anti-FGF1 Antibody (A92157) at a dilution of 1:100 (40x lens). DAPI was used to stain the cell nuclei (blue).