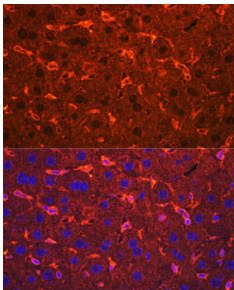


## Anti-Ceruloplasmin Antibody (A92238)

### Specifications:

Name:	Anti-Ceruloplasmin Antibody
Description:	Rabbit polyclonal antibody to Ceruloplasmin.
Applications:	ICC/IF
Recommended Dilutions:	ICC/IF: 1:50-1:200
Reactivity:	Human, Mouse, Rat
Immunogen:	Recombinant fusion protein containing a sequence corresponding to amino acids 680-790 of human Ceruloplasmin (NP_000087.1).
Sequence:	QTSLLHMQPDTEGTFNVECLTDDHYTGGMKQKYTVNQCRRQSEDSTFYLGERTYYIA AVEVEWDYSPQREWEKELHHLQEQNVSNFLDKGEFYIGSKYKKVVYRQYTDS
Host:	Rabbit
Clonality:	Polyclonal
Isotype:	IgG
Conjugate:	Unconjugated
Purification:	Affinity purification.
Product Form:	Liquid
Formulation:	Supplied in Phosphate Buffered Saline, pH 7.3, with 50% Glycerol and 0.01% Thiomersal.
Storage:	Shipped at 4°C. Upon delivery aliquot and store at -20°C. Avoid freeze / thaw cycles.
Disclaimer:	This product is for research use only. It is not intended for diagnostic or therapeutic use.

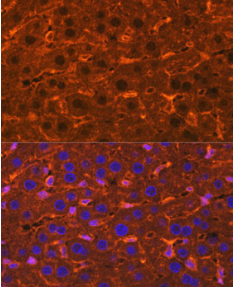
### Images:



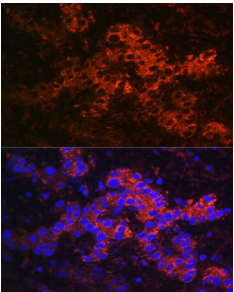
Immunofluorescence analysis of mouse liver using Anti-Ceruloplasmin Antibody (A92238) at a dilution of 1:100. DAPI was used to stain the cell nuclei (blue).

## Anti-Ceruloplasmin Antibody (A92238)

Images continued:



Immunofluorescence analysis of rat liver using Anti-Ceruloplasmin Antibody (A92238) at a dilution of 1:100. DAPI was used to stain the cell nuclei (blue).



Immunofluorescence analysis of human liver cancer using Anti-Ceruloplasmin Antibody (A92238) at a dilution of 1:100. DAPI was used to stain the cell nuclei (blue).