

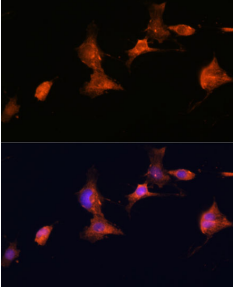
Anti-Tuberin Antibody (A92512)

Specifications:

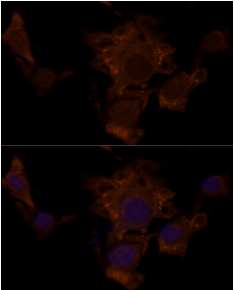
Name:	Anti-Tuberin Antibody
Description:	Rabbit polyclonal antibody to Tuberin.
Applications:	ICC/IF
Recommended Dilutions:	ICC/IF: 1:50-1:100
Reactivity:	Human, Mouse, Rat
Immunogen:	Recombinant fusion protein containing a sequence corresponding to amino acids 1531-1807 of TSC2 (NP_000539.2).
Sequence:	VQLLDQIPSYDTHKIAVLYVGEGQSNSELAILSNEHGSYRYTEFLTGLGRLLIELKDCQ PDKVYLGGLDVCGEDGQFTYCWHDIMQAVFHIALTMPTKDVKHRCDDKRRHLGNDFV SIVYNDSGEDFKLGTIKGQFNFVHVIVTPLDYECNLVSLQCRKDMEGLVDTSVAKIVS DRNLPFVARQMALHANMASQVHHSRSNPTDIYPSKWIARLRHIKRLRQRICEEAAYSN PSLPLVHPPSHSKAPAQTPAEPYVGVGQQRKRLISSVEDFTEFV
Host:	Rabbit
Clonality:	Polyclonal
Isotype:	IgG
Conjugate:	Unconjugated
Purification:	Affinity purification.
Product Form:	Liquid
Formulation:	Supplied in Phosphate Buffered Saline, pH 7.3, with 50% Glycerol and 0.01% Thiomersal.
Storage:	Shipped at 4°C. Upon delivery aliquot and store at -20°C. Avoid freeze / thaw cycles.
Disclaimer:	This product is for research use only. It is not intended for diagnostic or therapeutic use.

Anti-Tuberin Antibody (A92512)

Images:



Immunofluorescence analysis of C6 cells using Anti-Tuberin Antibody (A92512) at a dilution of 1:100. DAPI was used to stain the cell nuclei (blue).



Immunofluorescence analysis of NIH/3T3 cells using Anti-Tuberin Antibody (A92512) at a dilution of 1:100. DAPI was used to stain the cell nuclei (blue).