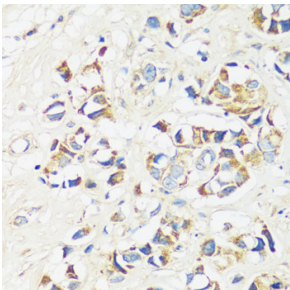


## Anti-CAPS1 Antibody (A92557)

### Specifications:

Name:	Anti-CAPS1 Antibody
Description:	Rabbit polyclonal antibody to CAPS1.
Applications:	IHC
Recommended Dilutions:	IHC: 1:50-1:200
Reactivity:	Human
Immunogen:	Recombinant fusion protein containing a sequence corresponding to amino acids 1020-1100 of human CADPS (NP_899630.1).
Sequence:	MASDMIESCVRTRIAFEVKLQKTSRSTDFRVPQSICTMFNVMVDAKAQSTKLCSMEM GQEHQYHSKIDELIEETVKEMIT
Host:	Rabbit
Clonality:	Polyclonal
Isotype:	IgG
Conjugate:	Unconjugated
Purification:	Affinity purification.
Product Form:	Liquid
Formulation:	Supplied in Phosphate Buffered Saline, pH 7.3, with 50% Glycerol and 0.01% Thiomersal.
Storage:	Shipped at 4°C. Upon delivery aliquot and store at -20°C. Avoid freeze / thaw cycles.
Disclaimer:	This product is for research use only. It is not intended for diagnostic or therapeutic use.

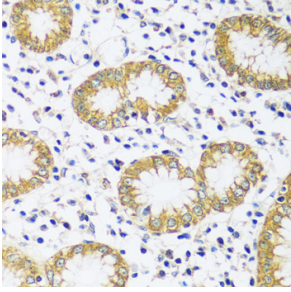
### Images:



Immunohistochemistry analysis of paraffin-embedded human breast cancer tissue using Anti-CAPS1 Antibody (A92557) at a dilution of 1:100 (40x lens).

## Anti-CAPS1 Antibody (A92557)

Images continued:



Immunohistochemistry analysis of paraffin-embedded human stomach using Anti-CAPS1 Antibody (A92557) at a dilution of 1:100 (40x lens).