

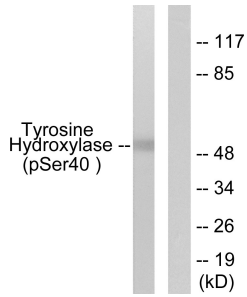
Anti-Tyrosine Hydroxylase (phospho Ser40) Antibody (A93434)

Specifications:

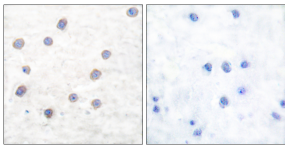
Name:	Anti-Tyrosine Hydroxylase (phospho Ser40) Antibody
Description:	Rabbit polyclonal antibody to Tyrosine Hydroxylase (phospho Ser40).
Specificity:	This antibody detects endogenous levels of Tyr Hydroxylase only when phosphorylated at Ser40.
Applications:	WB, IHC, ELISA
Recommended Dilutions:	WB: 1:500-1:1000, ELISA: 1:10000
Reactivity:	Human, Mouse, Rat
Immunogen:	Synthetic peptide derived from human Tyrosine Hydroxylase around the phosphorylation site of Ser40 (amino acids 41-90).
Host:	Rabbit
Clonality:	Polyclonal
Isotype:	IgG
Conjugate:	Unconjugated
Purification:	Purified from rabbit serum by antigen affinity chromatography using the immunizing peptide.
Molecular Weight:	58kDa
Product Form:	Liquid
Formulation:	Supplied in Phosphate Buffered Saline (without Mg ²⁺ and Ca ²⁺), pH 7.4, with 150mM NaCl, 0.02% Sodium Azide, and 50% Glycerol.
Storage:	Shipped at 4°C. Upon delivery aliquot and store at -20°C. Avoid freeze / thaw cycles.
Disclaimer:	This product is for research use only. It is not intended for diagnostic or therapeutic use.

Anti-Tyrosine Hydroxylase (phospho Ser40) Antibody (A93434)

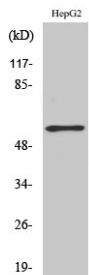
Images:



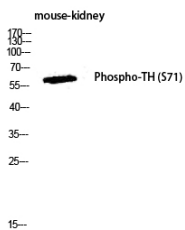
Western blot analysis of lysates from RAW264.7 cells treated with UV 30' using Anti-Tyrosine Hydroxylase (phospho Ser40) Antibody. The right hand lane represents a negative control, where the antibody is blocked by the immunising peptide.



Immunohistochemical analysis of paraffin-embedded human brain using Anti-Tyrosine Hydroxylase (phospho Ser40) Antibody. The right hand panel represents a negative control, where the antibody was pre-incubated with the immunising peptide.



Western blot analysis of various cells using Anti-Tyrosine Hydroxylase (phospho Ser40) Antibody.



Western blot analysis of mouse kidney lysis using Anti-Tyrosine Hydroxylase (phospho Ser40) Antibody.