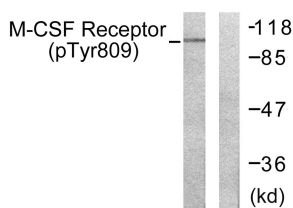


Anti-M-CSF Receptor (phospho Tyr809) Antibody (A93445)

Specifications:

Name:	Anti-M-CSF Receptor (phospho Tyr809) Antibody
Description:	Rabbit polyclonal antibody to M-CSF Receptor (phospho Tyr809).
Specificity:	This antibody detects endogenous levels of M-CSF Receptor only when phosphorylated at Tyr809.
Applications:	WB, ELISA
Recommended Dilutions:	WB: 1:500-1:1000, IHC: 1:50-1:100, ELISA: 1:10000
Reactivity:	Human, Mouse, Rat
Immunogen:	Synthetic peptide derived from human M-CSF Receptor around the phosphorylation site of Tyr809 (amino acids 781-830).
Host:	Rabbit
Clonality:	Polyclonal
Isotype:	IgG
Conjugate:	Unconjugated
Purification:	Purified from rabbit serum by antigen affinity chromatography using the immunizing phospho peptide.
Molecular Weight:	107kDa
Product Form:	Liquid
Formulation:	Supplied in Phosphate Buffered Saline (without Mg ²⁺ and Ca ²⁺), pH 7.4, with 150mM NaCl, 0.02% Sodium Azide, and 50% Glycerol.
Storage:	Shipped at 4°C. Upon delivery aliquot and store at -20°C. Avoid freeze / thaw cycles.
Disclaimer:	This product is for research use only. It is not intended for diagnostic or therapeutic use.

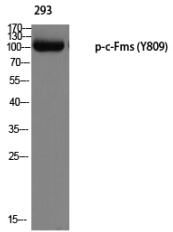
Images:



Western blot analysis of lysates from 293 cells treated with LPS 100ng/ml 30' using Anti-M-CSF Receptor (phospho Tyr809) Antibody. The right hand lane represents a negative control, where the antibody is blocked by the immunising peptide.

Anti-M-CSF Receptor (phospho Tyr809) Antibody (A93445)

Images continued:



Western blot analysis of 293 using Anti-M-CSF Receptor (phospho Tyr809) Antibody.