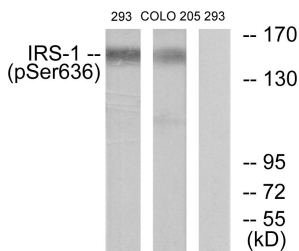


Anti-IRS-1 (phospho Ser636) Antibody (A93492)

Specifications:

Name:	Anti-IRS-1 (phospho Ser636) Antibody
Description:	Rabbit polyclonal antibody to IRS-1 (phospho Ser636).
Specificity:	This antibody detects endogenous levels of IRS-1 only when phosphorylated at Ser636.
Applications:	WB, IHC, IF, ELISA
Recommended Dilutions:	IHC: 1:50-1:100, ELISA: 1:20000
Reactivity:	Human, Mouse, Rat
Immunogen:	Synthetic peptide derived from human IRS-1 around the phosphorylation site of Ser636 (amino acids 603-652).
Host:	Rabbit
Clonality:	Polyclonal
Isotype:	IgG
Conjugate:	Unconjugated
Purification:	Purified from rabbit serum by antigen affinity chromatography using the immunizing phospho peptide.
Molecular Weight:	131kDa
Product Form:	Liquid
Formulation:	Supplied in Phosphate Buffered Saline (without Mg ²⁺ and Ca ²⁺), pH 7.4, with 150mM NaCl, 0.02% Sodium Azide, and 50% Glycerol.
Storage:	Shipped at 4°C. Upon delivery aliquot and store at -20°C. Avoid freeze / thaw cycles.
Disclaimer:	This product is for research use only. It is not intended for diagnostic or therapeutic use.

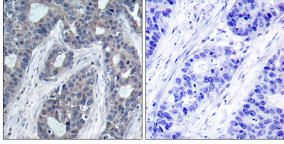
Images:



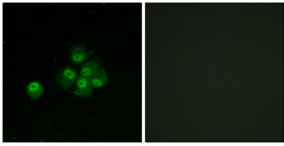
Western blot analysis of lysates from 293 cells and COLO205 cells using Anti-IRS-1 (phospho Ser636) Antibody. The right hand lane represents a negative control, where the antibody is blocked by the immunising peptide.

Anti-IRS-1 (phospho Ser636) Antibody (A93492)

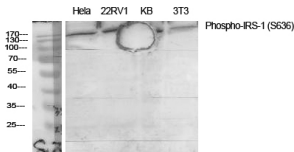
Images continued:



Immunohistochemical analysis of paraffin-embedded human breast carcinoma using Anti-IRS-1 (phospho Ser636) Antibody. The right hand panel represents a negative control, where the antibody was pre-incubated with the immunising peptide.



Immunofluorescence analysis of MCF7 cells using Anti-IRS-1 (phospho Ser636) Antibody. The right hand panel represents a negative control, where the antibody was pre-incubated with the immunising peptide.



Western blot analysis of various cells using Anti-IRS-1 (phospho Ser636) Antibody.