

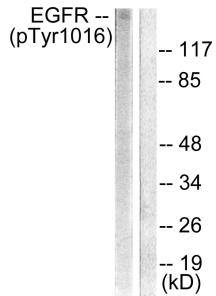
Anti-EGFR (phospho Tyr1016) Antibody (A93499)

Specifications:

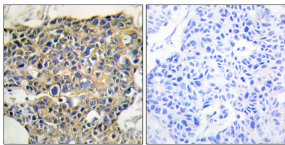
Name:	Anti-EGFR (phospho Tyr1016) Antibody
Description:	Rabbit polyclonal antibody to EGFR (phospho Tyr1016).
Specificity:	This antibody detects endogenous levels of EGFR only when phosphorylated at Tyr1016.
Applications:	WB, IHC, IF, ELISA
Recommended Dilutions:	WB: 1:500-1:1000, ELISA: 1:10000
Reactivity:	Human, Mouse, Rat
Immunogen:	Synthetic peptide derived from human EGFR around the phosphorylation site of Tyr1016 (amino acids 986-1035).
Host:	Rabbit
Clonality:	Polyclonal
Isotype:	IgG
Conjugate:	Unconjugated
Purification:	Purified from rabbit serum by antigen affinity chromatography using the immunizing phospho peptide.
Molecular Weight:	134kDa
Product Form:	Liquid
Formulation:	Supplied in Phosphate Buffered Saline (without Mg ²⁺ and Ca ²⁺), pH 7.4, with 150mM NaCl, 0.02% Sodium Azide, and 50% Glycerol.
Storage:	Shipped at 4°C. Upon delivery aliquot and store at -20°C. Avoid freeze / thaw cycles.
Disclaimer:	This product is for research use only. It is not intended for diagnostic or therapeutic use.

Anti-EGFR (phospho Tyr1016) Antibody (A93499)

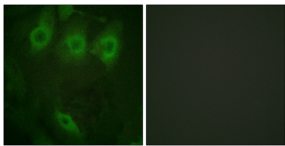
Images:



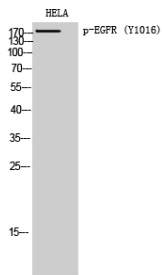
Western blot analysis of lysates from HUVEC cells treated with Serum 20% 30' using Anti-EGFR (phospho Tyr1016) Antibody. The right hand lane represents a negative control, where the antibody is blocked by the immunising peptide.



Immunohistochemical analysis of paraffin-embedded human breast carcinoma using Anti-EGFR (phospho Tyr1016) Antibody. The right hand panel represents a negative control, where the antibody was pre-incubated with the immunising peptide.



Immunofluorescence analysis of HeLa cells using Anti-EGFR (phospho Tyr1016) Antibody. The right hand panel represents a negative control, where the antibody was pre-incubated with the immunising peptide.



Western blot analysis of HELA cells using Anti-EGFR (phospho Tyr1016) Antibody.