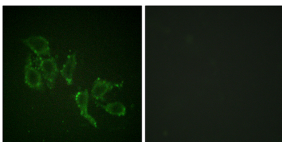


Anti-A-RAF (phospho Tyr302) Antibody (A93506)

Specifications:

Name:	Anti-A-RAF (phospho Tyr302) Antibody
Description:	Rabbit polyclonal antibody to A-RAF (phospho Tyr302).
Specificity:	This antibody detects endogenous levels of A-RAF only when phosphorylated at Tyr302.
Applications:	WB, IHC, IF, ELISA
Recommended Dilutions:	IHC: 1:50-1:100, IF: 1:100-1:500, ELISA: 1:5000
Reactivity:	Human, Mouse, Rat
Immunogen:	Synthetic peptide derived from human A-RAF around the phosphorylation site of Tyr302 (amino acids 276-325).
Host:	Rabbit
Clonality:	Polyclonal
Isotype:	IgG
Conjugate:	Unconjugated
Purification:	Purified from rabbit serum by antigen affinity chromatography using the immunizing phospho peptide.
Molecular Weight:	67kDa
Product Form:	Liquid
Formulation:	Supplied in Phosphate Buffered Saline (without Mg ²⁺ and Ca ²⁺), pH 7.4, with 150mM NaCl, 0.02% Sodium Azide, and 50% Glycerol.
Storage:	Shipped at 4°C. Upon delivery aliquot and store at -20°C. Avoid freeze / thaw cycles.
Disclaimer:	This product is for research use only. It is not intended for diagnostic or therapeutic use.

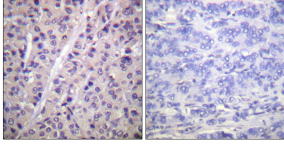
Images:



Immunofluorescence analysis of HepG2 cells using Anti-A-RAF (phospho Tyr302) Antibody. The right hand panel represents a negative control, where the antibody was pre-incubated with the immunising peptide.

Anti-A-RAF (phospho Tyr302) Antibody (A93506)

Images continued:



Immunohistochemical analysis of paraffin-embedded human breast carcinoma using Anti-A-RAF (phospho Tyr302) Antibody. The right hand panel represents a negative control, where the antibody was pre-incubated with the immunising peptide.