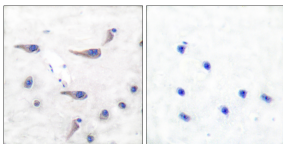


Anti-MARCKS (phospho Ser163) Antibody (A93547)

Specifications:

Name:	Anti-MARCKS (phospho Ser163) Antibody
Description:	Rabbit polyclonal antibody to MARCKS (phospho Ser163).
Specificity:	This antibody detects endogenous levels of MARCKS only when phosphorylated at Ser163.
Applications:	IHC, ELISA
Recommended Dilutions:	WB: 1:500-1:1000, ELISA: 1:4000
Reactivity:	Human, Mouse, Rat
Immunogen:	Synthetic peptide derived from human MARCKS around the phosphorylation site of Ser163 (amino acids 136-185).
Host:	Rabbit
Clonality:	Polyclonal
Isotype:	IgG
Conjugate:	Unconjugated
Purification:	Purified from rabbit serum by antigen affinity chromatography using the immunizing phospho peptide.
Molecular Weight:	31kDa
Product Form:	Liquid
Formulation:	Supplied in Phosphate Buffered Saline (without Mg ²⁺ and Ca ²⁺), pH 7.4, with 150mM NaCl, 0.02% Sodium Azide, and 50% Glycerol.
Storage:	Shipped at 4°C. Upon delivery aliquot and store at -20°C. Avoid freeze / thaw cycles.
Disclaimer:	This product is for research use only. It is not intended for diagnostic or therapeutic use.

Images:



Immunohistochemical analysis of paraffin-embedded human brain using Anti-MARCKS (phospho Ser163) Antibody. The right hand panel represents a negative control, where the antibody was pre-incubated with the immunising peptide.