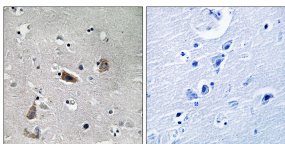


Anti-Doublecortin (phospho Ser376) Antibody (A93603)

Specifications:

Name:	Anti-Doublecortin (phospho Ser376) Antibody
Description:	Rabbit polyclonal antibody to Doublecortin (phospho Ser376).
Specificity:	This antibody detects endogenous levels of Doublecortin only when phosphorylated at Ser376.
Applications:	IHC, ELISA
Recommended Dilutions:	WB: 1:500-1:1000, ELISA: 1:1000
Reactivity:	Human, Mouse, Rat
Immunogen:	Synthetic peptide derived from human Doublecortin around the phosphorylation site of Ser376 (amino acids 346-395).
Host:	Rabbit
Clonality:	Polyclonal
Isotype:	IgG
Conjugate:	Unconjugated
Purification:	Purified from rabbit serum by antigen affinity chromatography using the immunizing phospho peptide.
Molecular Weight:	44kDa
Product Form:	Liquid
Formulation:	Supplied in Phosphate Buffered Saline (without Mg ²⁺ and Ca ²⁺), pH 7.4, with 150mM NaCl, 0.02% Sodium Azide, and 50% Glycerol.
Storage:	Shipped at 4°C. Upon delivery aliquot and store at -20°C. Avoid freeze / thaw cycles.
Disclaimer:	This product is for research use only. It is not intended for diagnostic or therapeutic use.

Images:



Immunohistochemical analysis of paraffin-embedded human brain using Anti-Doublecortin (phospho Ser376) Antibody. The right hand panel represents a negative control, where the antibody was pre-incubated with the immunising peptide.