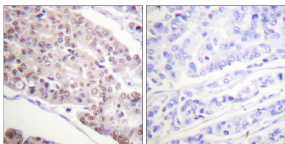


## Anti-Histone H4 (acetyl Lys8) Antibody (A93770)

### Specifications:

Name:	Anti-Histone H4 (acetyl Lys8) Antibody
Description:	Rabbit polyclonal antibody to Histone H4 (acetyl Lys8).
Specificity:	This antibody detects endogenous levels of total Histone H4 protein only when acetylated at Lys8.
Applications:	IHC, IF, ELISA
Recommended Dilutions:	WB: 1:500-1:1000, ELISA: 1:20000
Reactivity:	Human, Mouse, Rat
Immunogen:	Synthetic peptide derived from human Histone H4 around the acetylated site of Lys8 (amino acids 1-50).
Host:	Rabbit
Clonality:	Polyclonal
Isotype:	IgG
Conjugate:	Unconjugated
Purification:	Purified from rabbit serum by antigen affinity chromatography using the immunizing phospho peptide.
Molecular Weight:	11kDa
Product Form:	Liquid
Formulation:	Supplied in Phosphate Buffered Saline (without Mg <sup>2+</sup> and Ca <sup>2+</sup> ), pH 7.4, with 150mM NaCl, 0.02% Sodium Azide, and 50% Glycerol.
Storage:	Shipped at 4°C. Upon delivery aliquot and store at -20°C. Avoid freeze / thaw cycles.
Disclaimer:	This product is for research use only. It is not intended for diagnostic or therapeutic use.

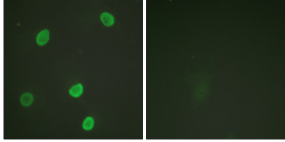
### Images:



Immunohistochemical analysis of paraffin-embedded human breast carcinoma tissue using Anti-Histone H4 (acetyl Lys8) Antibody. The right hand panel represents a negative control, where the antibody was pre-incubated with the immunising peptide.

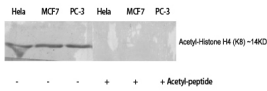
# Anti-Histone H4 (acetyl Lys8) Antibody (A93770)

Images continued:



Immunofluorescence analysis of HeLa cells using Anti-Histone H4 (acetyl Lys8) Antibody. The right hand panel represents a negative control, where the antibody was pre-incubated with the immunising peptide.

Western blot analysis of various cells using Anti-Histone H4 (acetyl Lys8) Antibody.



Western blot analysis of KB cells using Anti-Histone H4 (acetyl Lys8) Antibody.

