

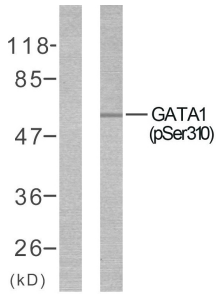
Anti-GATA1 (phospho Ser310) Antibody (A93850)

Specifications:

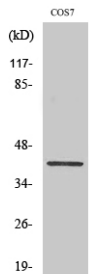
Name:	Anti-GATA1 (phospho Ser310) Antibody
Description:	Rabbit polyclonal antibody to GATA1 (phospho Ser310).
Specificity:	This antibody detects endogenous levels of GATA1 only when phosphorylated at Ser310.
Applications:	WB, ELISA
Recommended Dilutions:	WB: 1:500-1:1000, ELISA: 1:10000
Reactivity:	Human, Mouse, Rat
Immunogen:	Synthetic peptide derived from human GATA1 around the phosphorylation site of Ser310 (amino acids 277-326).
Host:	Rabbit
Clonality:	Polyclonal
Isotype:	IgG
Conjugate:	Unconjugated
Purification:	Purified from rabbit serum by antigen affinity chromatography using the immunizing phospho peptide.
Molecular Weight:	42kDa
Product Form:	Liquid
Formulation:	Supplied in Phosphate Buffered Saline (without Mg ²⁺ and Ca ²⁺), pH 7.4, with 150mM NaCl, 0.02% Sodium Azide, and 50% Glycerol.
Storage:	Shipped at 4°C. Upon delivery aliquot and store at -20°C. Avoid freeze / thaw cycles.
Disclaimer:	This product is for research use only. It is not intended for diagnostic or therapeutic use.

Anti-GATA1 (phospho Ser310) Antibody (A93850)

Images:



Western blot analysis of lysates from COS7 cells treated with EPO using Anti-GATA1 (phospho Ser310) Antibody. The left hand lane represents a negative control, where the antibody is blocked by the immunising peptide.



Western blot analysis of various cells using Anti-GATA1 (phospho Ser310) Antibody.